

Community Collaborative Rain, Hail & Snow Network



Southern



New England

August 2020

The hottest month of the year, the hottest July in many years, left us short of precipitation in many parts of our locale. Rain did not fall the same on all in July with station totals over 7" and station totals less than 1".

Tropical Storm Isaias started in late July and caused a few days delay in sending out this newsletter, waiting for internet services to return here in western Connecticut.

Joe has a feature article about our early August tropical storm, and I included some lessons learned from this recent experience. We still have months to go in this tropical storm season.

More record reporting from you during July. We are nearing 12,000 Daily Reports where we were breaking 10,000 Daily Reports last year in July. We continue to grow in observers and in a variety of dimensions of reporting. More reports of every kind. Now, we have a new mapping tool to see those reports.

A short list of observers on the Grand List. And a long list of observers for precip reporting and our Rulers of the Snow segment.

Let's get into it.

The “Grand” List

Congratulations to all of these observers from our three states who have recently passed a milestone of 1000 Daily Reports.

4000 Daily Reports

CT-FR-9 Brookfield 3.3 SSE

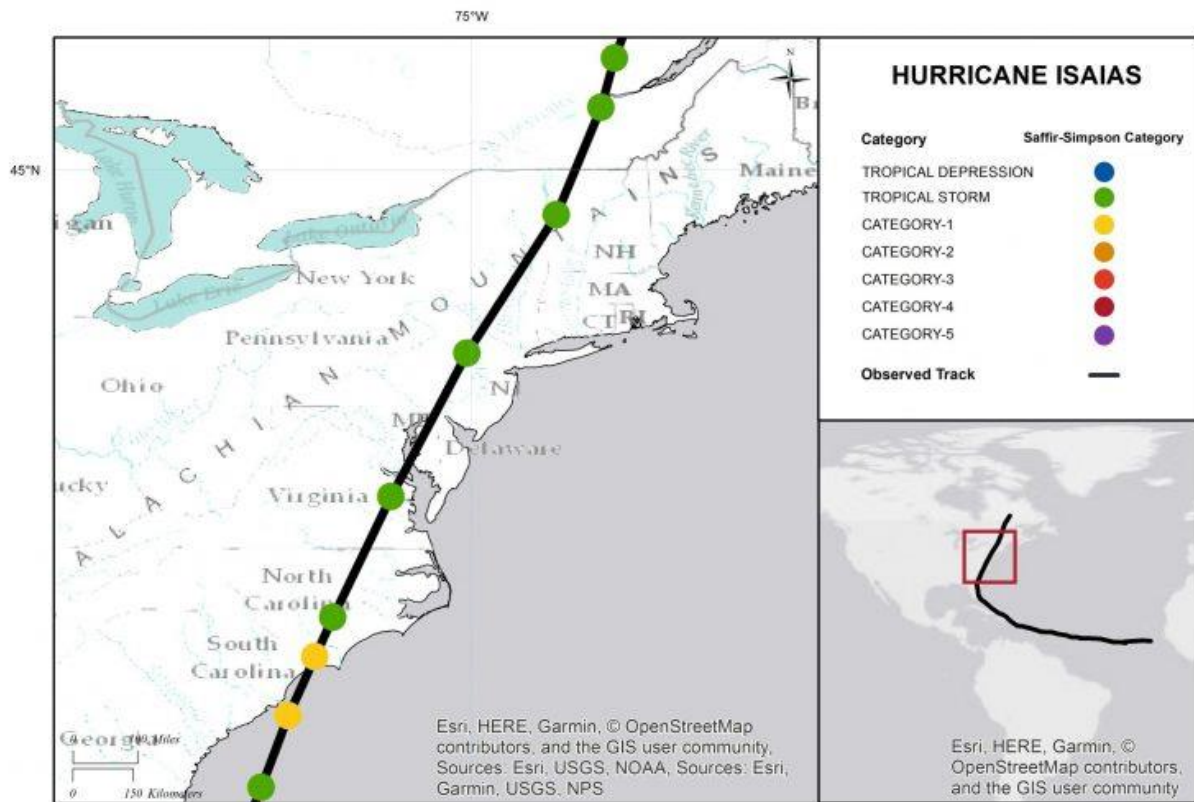
1000 Daily Reports

MA-MD-80 Lincoln 1.5 SW
NY-SF-114 Fishers Island 0.5 NE

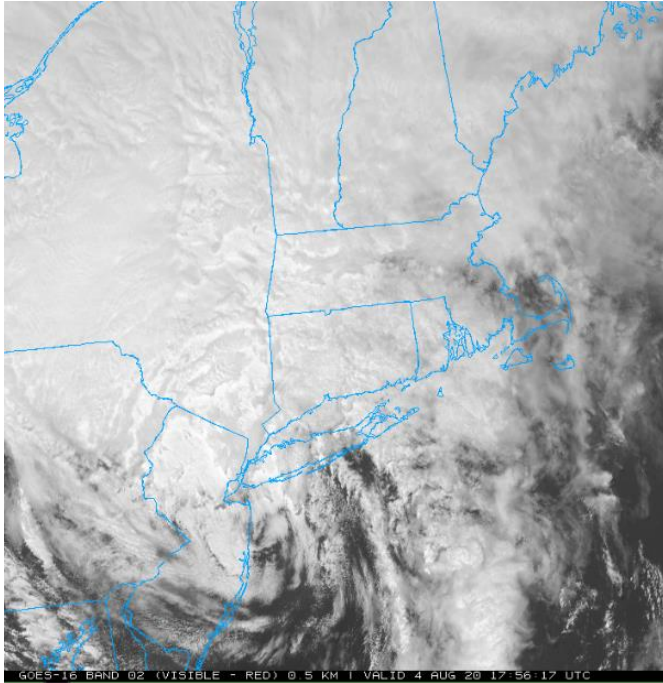
Tropical Storm Isaias

Joe DelliCarpini – Science & Operations Officer, NWS Boston/Norton MA

Tropical Storm Isaias (pronounced ees-ah-EE-ahs) was a quick moving storm, traveling at speeds of 35 to 40 mph as it moved northward through New Jersey and eastern New York. In southern New England, the storm's primary impacts were widespread strong wind gusts of 45 to 55 mph and localized gusts as high as 60 mph. This resulted in widespread power outages, especially in Connecticut and western Massachusetts, where many communities had more than 80 percent of utility customers out of power.



TRACK OF HURRICANE/TROPICAL STORM ISAIAS (USGS)

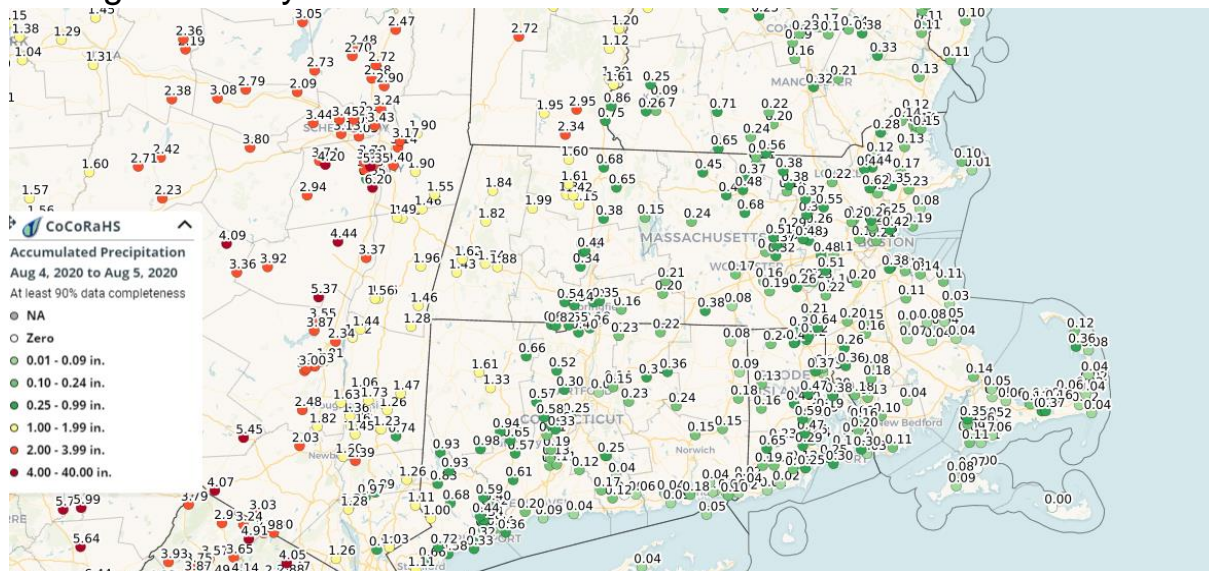


SATELLITE PHOTO OF TROPICAL STORM ISAIAS

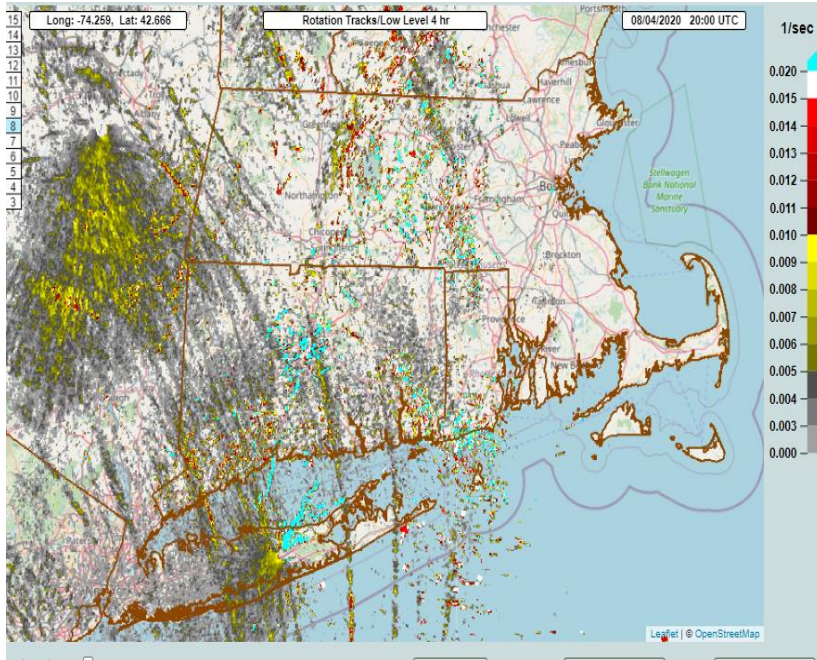
The heaviest rain fell to the west of Isaias' track, across eastern Pennsylvania and central New York, which is common with tropical systems in New England. In our area, the heaviest rainfall was restricted to the Berkshires and northwest Connecticut where amounts of 1.50" to just over 2" occurred. No flooding was observed.

Peak storm surge values along the south coastal areas were generally 1 to 2.5 feet, with the highest values noted in the upper portion of Narragansett Bay. However, the peak surge from

the storm occurred several hours before astronomical high tide, so no coastal flooding occurred. Had it occurred just a few hours later, widespread minor flooding would have affected much of south coastal Rhode Island and Massachusetts, including the communities around Narragansett Bay.



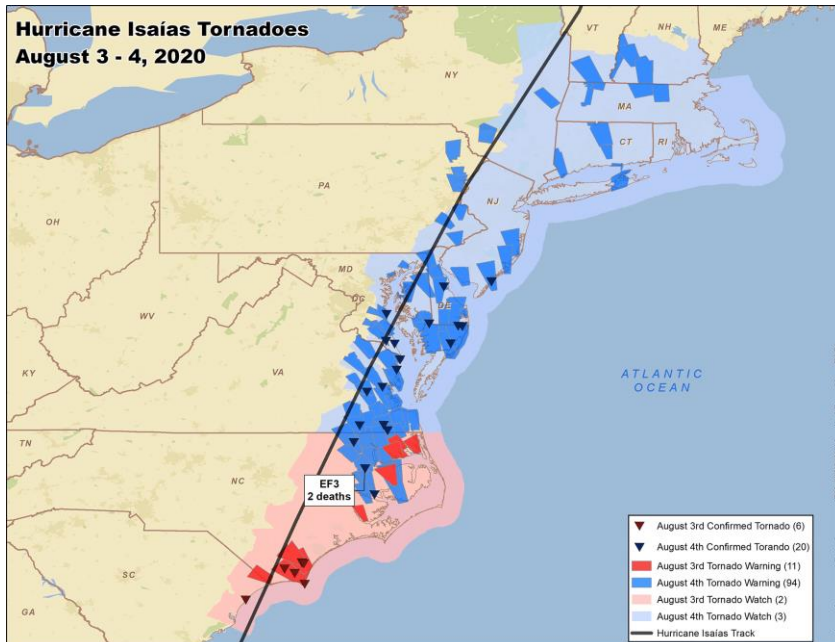
CoCoRaHS RAINFALL REPORTS FROM AUGUST 5 FROM OUR NEW MAPPING TOOL



RADAR ROTATION TRACKS ASSOCIATED WITH RAIN BANDS

Several cells within Isaias' rain bands showed strong rotation and exhibited the potential for short-lived tornadoes. In the image below, you can see the rotation tracks associated with the rain bands. The strongest tracks moved through parts of Connecticut and central Massachusetts, where Tornado Warnings were issued. One tornado (EF-1) was

confirmed in Westport, CT when a waterspout moved onshore from Long Island Sound. It caused significant damage to a home and downed several trees. These rotation tracks can also be used after an event to determine which locations may have seen damage and can be helpful to narrow the search area for damage surveys.



TORNADO WATCHES AND WARNINGS FROM ISAIAS (@USTORNADOES)

News Items

New Maps: On Saturday August 1st, the web site has been changed. Instead of the point and click, one state, one county at a time, mapping tool that has been on the website for as long as we can remember, an entirely new interactive mapping tool is now available for all to use.

<https://maps.cocorahs.org>

There is a [5-minute video](#) as well as a [document](#) to view.

More than just a precipitation map that spans over states and countries, this tool can be used to view snow fall and snow depth as well as Significant Weather Reports and Hail Reports too.

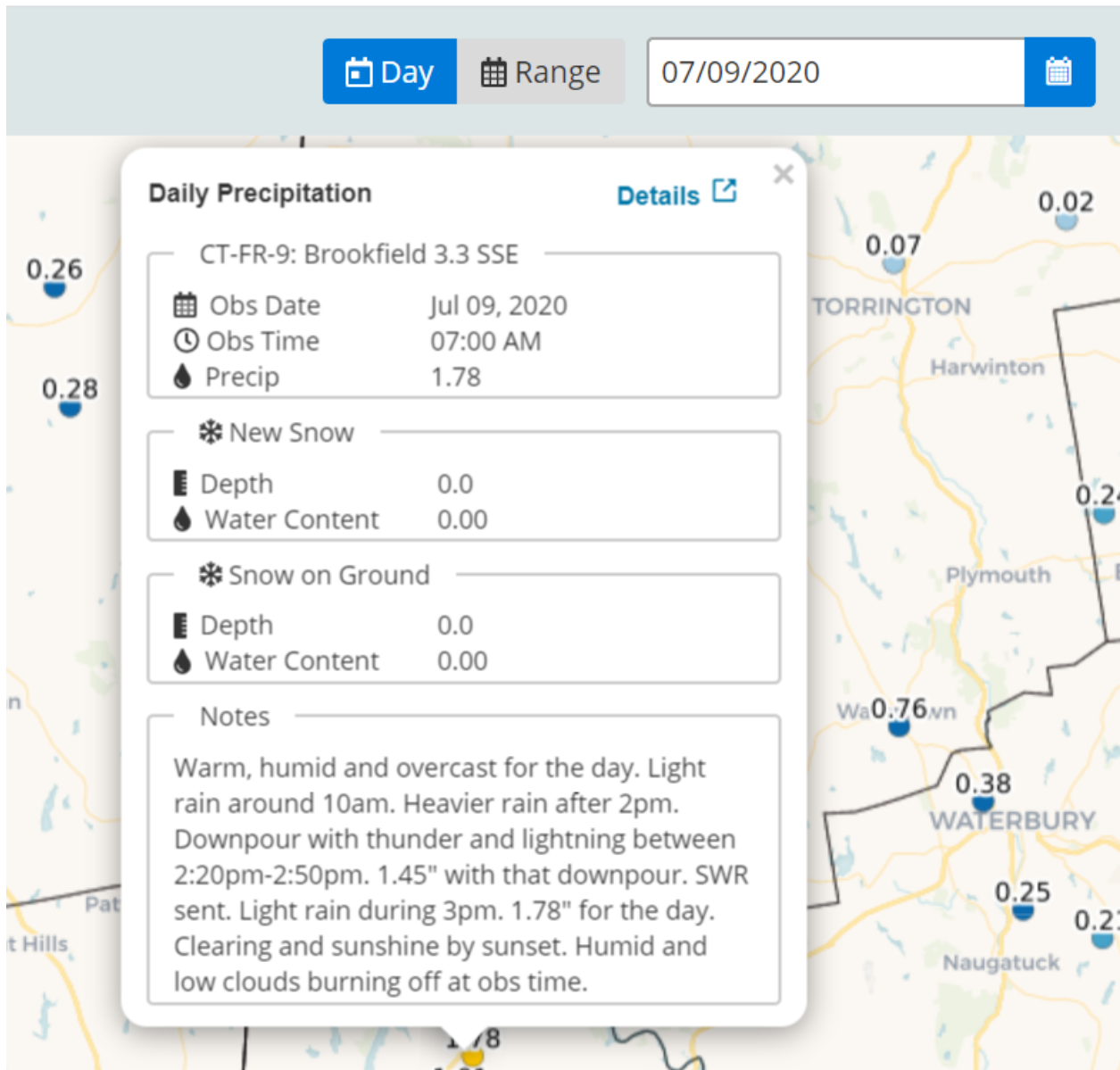
There is a 45-day limit to the range of dates you can select.

Many of the aspects that we emphasize throughout the year, become more visible with the new mapping tool. Aspects such as

- Reporting! Reporting zeros!
- Not missing many or any days! When a range of dates is selected, the stations that are selected for the map are those that have not missed any more than 10% of the days within the range.
- Typing a Comment, especially one that verifies or clarifies your report of precipitation.
- Reporting snow fall and snow depth.

Click on a dot of Daily Precipitation and see not only the reported values but read the Comment as well. Click on “Details” and you are taken to the report as it would appear under “View Precipitation Reports”

On the next page, let’s take a look at one report from last month.



Station ID. Values are grouped in blocks. Symbols to go with the labels. And the Comment is there to read.

This is the new interactive map.

mPING app for Apple and Android: Because of malicious activity that took place in early July, mPING has been suspended. Article [link here](#).

For those that are looking for more functions to be added to our mobile reporting app, such as Significant Weather Reports and Hail Reports, give this bad experience with mPING some thought as to what can happen to the GPS coordinates of a mobile device.

Website Migration: This past Friday night, August 7, there were a few hours of downtime as our website migrated to the Microsoft Azure platform. As we moved 20+ years of databases and links and interfaces, you may experience downtime or error messages never seen before. If you do, please be patient, maybe come back at another time. Write down what you want to enter. You can ask a Coordinator to enter a report for you, or to ask the staff at Headquarters to look into your problem further.

A station ID sent from you is helpful to recall who and where you are.

Thanks for your understanding in this large undertaking for our network, as we continue to grow and find new ways to operate a growing network.

Single Month Records: Like a broken record, we keep breaking our area's single month records. Congratulations to all!!

- ✓ Reporting Observers: 445
- ✓ Daily Reports per day: 385
- ✓ Single day record of 419 reports on July 11th
- ✓ Single month reporting records for Connecticut and Rhode Island.
- ✓ Condition Monitoring Reports: 113
- ✓ "Rulers of the Snow" Stations: 82

And leading the entire network with:

- ✓ The highest % of snow depth reports.

Observer Tips

Significant Weather Reports: Keep our reporting criteria in mind, as we can alert our area NWS Forecast Offices in real time with what is occurring, as you saw in the previous page. Reporting criteria are

- **1” or more of rain in 1 hour or less.**
- **2” or more of rain.** We had 21 reports of 2” or more rain in July. We are asking for Significant Weather Reports when that occurs.
- **Flooding.**
- **Anything you feel is significant.**

Hurricane Preparedness:

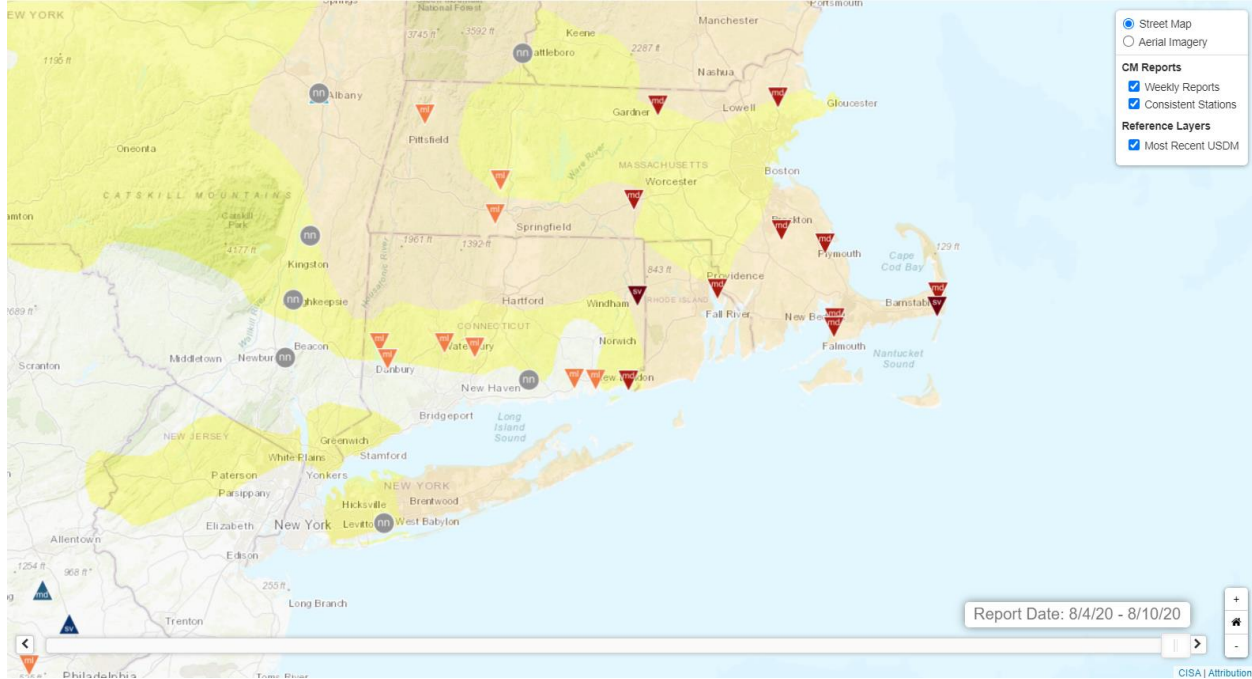
Now that Isaias has departed, and we have not yet reached the midpoint of the tropical season, a few pearls of recent wisdom about tropical systems.

- If the storm is in The Bahamas, it’s your business! Storms located in The Bahamas are in a prime launching point to our locale.
- Get food and fuel ahead of the storm arrival, like you would ahead of a winter storm. Not because of shortages of food and fuel that follow the storm, but because of shortages of locations with working electricity. Gas lines bring back memories of Years 1973 and 1979.
- Make sure you charge your cell phone and other devices before the storm hits!
- We are not as clear cut of trees as we were 50-100 years ago. Be prepared to be without electricity for days to a week or longer.
- Services such as cable TV, internet, cell phone and voice over internet, may work after the storm passes for about 12-24 hours, until its battery backup runs out.
- If you are not located on the wind-side of the storm (east of the center), you will probably be on the rain-side of the storm (west of the center). Be prepared for flooding.

Every locale is different, but not immune from the impacts of wind, rising coastal waters, and flooding inland rains. [Be prepared.](#) [Stay informed](#) and on a [mobile device](#).

Condition Monitoring Reports: Tropical Storms and thunderstorms come and go. What are the conditions where you are?

One report a week is all that we seek. Develop a reputation of being a Consistent Station by submitting over 20 reports in a 52-week timeframe.



Naugatuck 1.7 NNE
2020-08-10T00:00:00Z

Patches of brown grass Lot of honey and bumble bees around, tomatoes in the garden are ripening quickly

CT-NH-45 -- Agriculture,Plants And Wildlife

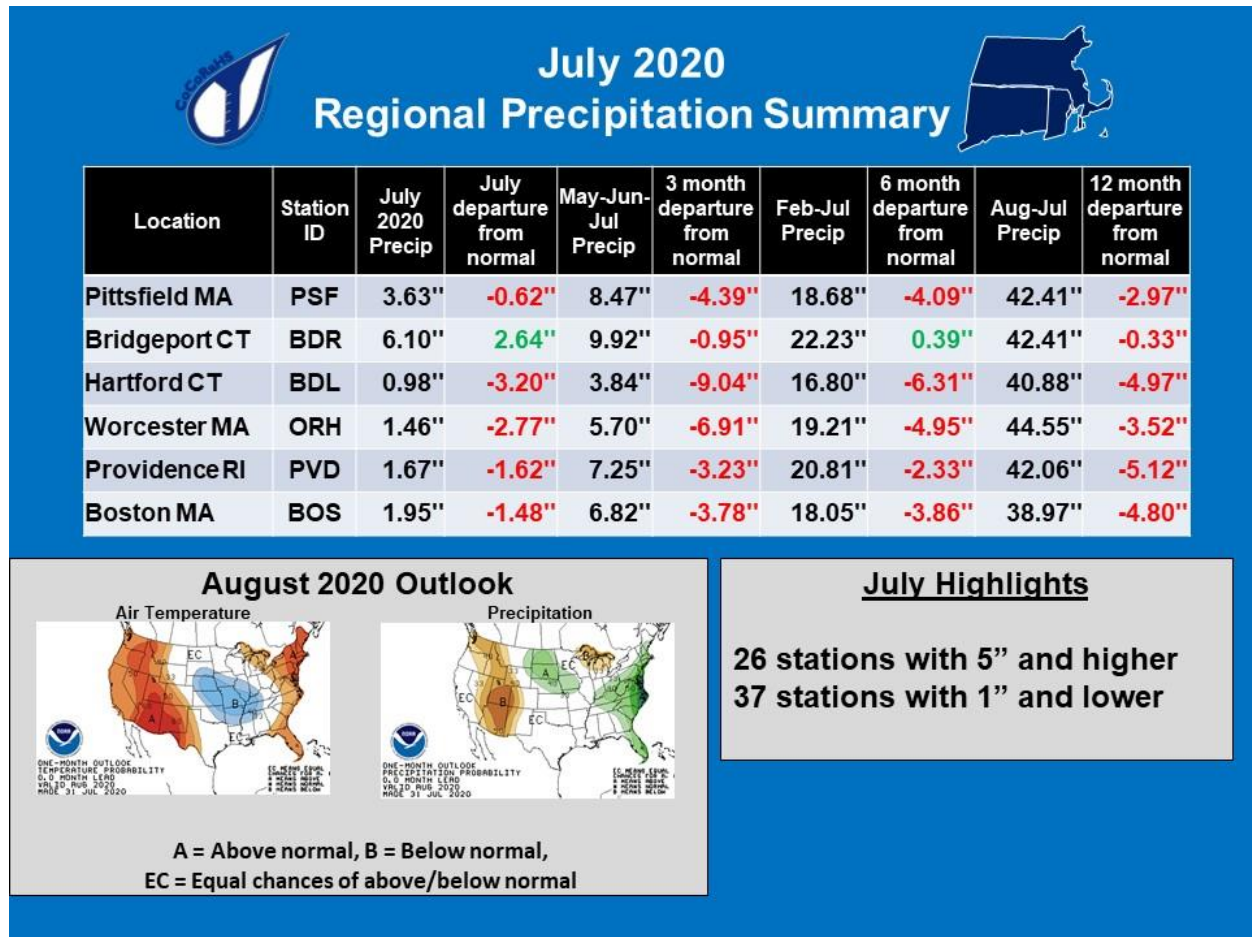
East Bridgewater 0.3 WSW
2020-08-09T00:00:00Z

Basically no rain from the tropical storm here, only 0.04". Grass that isn't watered is all but dead now, and garden vegetables need watering as allowed locally. Streams have gone dry, Satucket river has a very low level, maybe a foot now, but still flowing. Animals seem to be doing ok, and the birds love our bird bath!

MA-PL-22 -- General Awareness,Plants And Wildlife

Detail and Summary for July 2020

From the National Weather Service (NWS) Climate sites for July 2020.

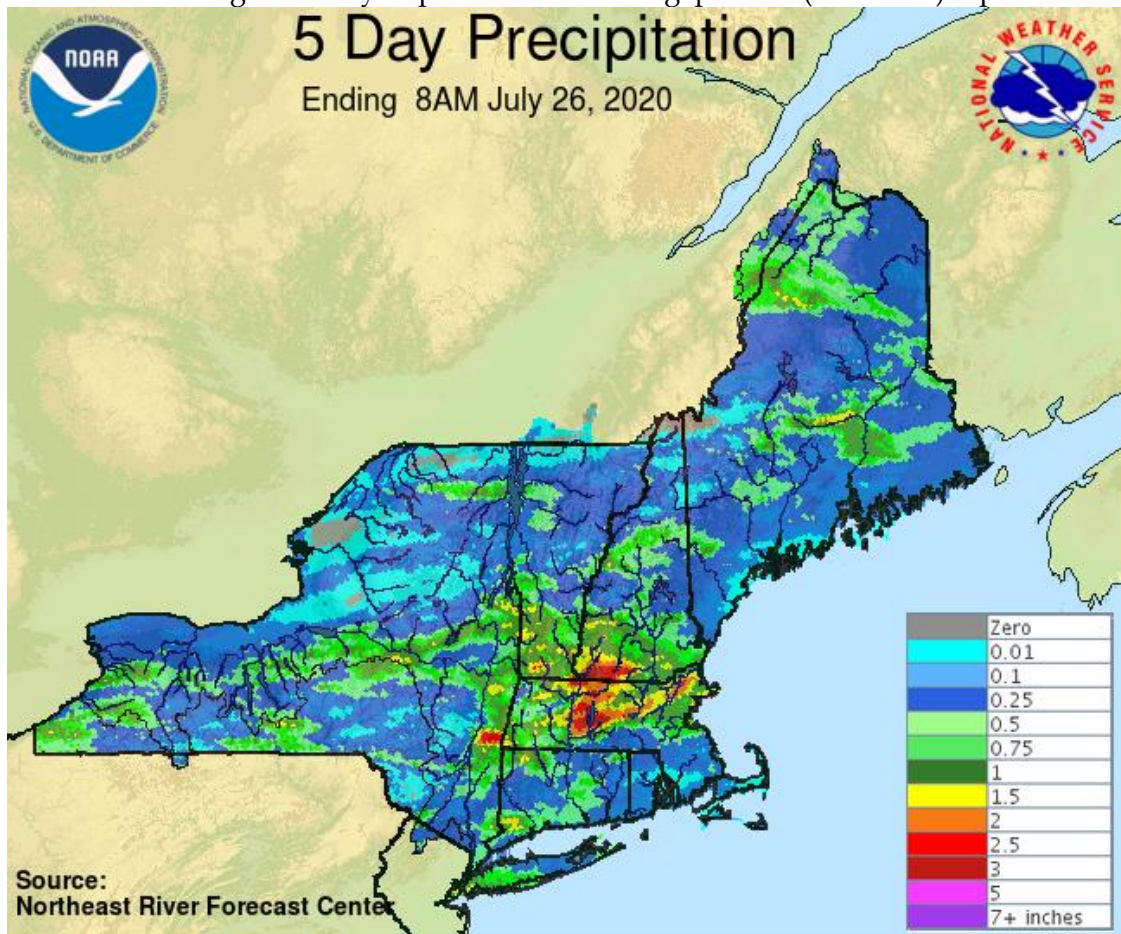


Rain on the 1st with a little more on the 2nd. Western half rain on the 4th. Widespread light rain on the 11th to go along with our single day record. A downpour over Danbury CT on the 12th and a downpour of Tolland CT on the 14th, along with Essex County MA. Narrangansett RI rain on the 15th. Light rains to the north and west on the 17th followed by more light rains on the 18th, 21st and 22nd. Big rain to the north on the 23rd and 24th. All this totaled and appears on the map on the next page.

From Providence RI to Plymouth MA on the 29th. And we end the month with rain on the shoreline on the 31st. Take in the variable nature of precipitation. And do take in the next section with appreciation for your efforts.

From your reports for July 2020

Observers reporting	452
Reported all 31 days	252
Completed by Multi-Day Reports	45
Missing 1 or 2 reports	67
Daily Reports	11,944
Zero Reports	6,630
Non-Zero Reports	5,314
Daily Comments	2,004
Multi-Day Reports	136
Condition Monitoring Reports	113
Significant Weather Reports	32
Hail Reports	5
Snowfall Reports	6,124
Snow Depth Reports	3,277
Total SWE Reports	2,389
Highest Daily Report	4.15" in Bridgeport CT (CT-FR-70) reported on 7/4



Not quite a record, but another long list of stations to take in.

With most people staying close to home, the decrease in Multi-Day Reports is noticeable, and makes putting this list together a bit easier. A few stations took some long stretches of days off, but not the dozen or more stations that we normally see.

July has wide ranging precip totals. The variable nature of precipitation is here to see. Dry on Cape Cod. Wet in southwest Connecticut. Overall a mostly dry month with the average below our normal 4" of precip for the month.

Here's how this list works: Have no missing days in the calendar month, no NA's on big precip days, use Multi-Day Reports accurately, and your station can end up on this list.

Watershed	Watershed Name	Station Number	Station Name	Precip
01070004	Nashua			
0107000401	North Nashua River	MA-WR-44	Westminster 0.6 WSW	3.94"
0107000401	North Nashua River	MA-WR-8	Fitchburg 1.6 SSW	2.11"
0107000401	North Nashua River	MA-WR-22	Fitchburg 2.0 NNE	4.30"
0107000402	Headwaters Nashua River	MA-WR-56	Sterling 4.3 NW	5.62"
0107000402	Headwaters Nashua River	MA-WR-58	Lunenburg 0.6 NE	3.95"
0107000403	Squannacook River	MA-MD-47	West Townsend 0.5 W	4.62"
0107000403	Squannacook River	MA-MD-36	Townsend 2.6 S	3.20"
0107000404	Nissitissit River-Nashua River	MA-MD-169	Pepperell 2.1 SSW	3.24"
01070005	Concord			
0107000501	Sudbury River	MA-MD-156	Marlborough 2.8 ENE	1.99"
0107000501	Sudbury River	MA-MD-89	Sudbury 3.6 W	1.91"
0107000502	Concord River	MA-WR-30	Shrewsbury 1.6 NNE	2.22"
0107000502	Concord River	MA-WR-28	Berlin 1.3 WSW	3.36"
0107000502	Concord River	MA-WR-18	Northborough 0.6 SSE	1.75"
0107000502	Concord River	MA-WR-42	Northborough 2.3 N	2.15"
0107000502	Concord River	MA-MD-115	Hudson 1.4 NW	2.91"
0107000502	Concord River	MA-WR-55	Harvard 2.1 S	3.54"
0107000502	Concord River	MA-MD-12	Acton 1.3 SW	3.88"
0107000502	Concord River	MA-MD-166	Acton 0.5 SW	3.58"
0107000502	Concord River	MA-MD-51	Maynard 0.7 ESE	2.49"

0107000502	Concord River	MA-MD-62	Chelmsford 1.2 E	3.85"
01070006	Merrimack River			
0107000612	Stony Brook - Merrimack River	MA-MD-104	Littleton 2.8 NNW	4.05"
0107000612	Stony Brook - Merrimack River	MA-ES-10	Andover 1.5 W	4.73"
0107000613	Shawsheen River	MA-MD-52	Lexington 0.6 SW	1.67"
0107000613	Shawsheen River	MA-MD-96	Lexington 0.3 NE	2.23"
0107000613	Shawsheen River	MA-ES-48	Andover 0.6 E	5.64"
0107000614	Powwow River - Merrimack River	MA-ES-66	North Andover 0.3 NW	4.04"
0107000614	Powwow River - Merrimack River	MA-ES-20	Haverhill 0.7 N	2.49"
0107000614	Powwow River - Merrimack River	MA-ES-4	Groveland 0.5 WSW	4.82"
0107000614	Powwow River - Merrimack River	MA-ES-59	Amesbury 1.2 N	3.94"
0107000614	Powwow River - Merrimack River	MA-ES-68	Newburyport 1.3 WNW	3.56"
0107000614	Powwow River - Merrimack River	MA-ES-64	Newburyport 0.4 NNW	3.47"
01080201	Middle Connecticut			
0108020106	Manhan River - Connecticut River	MA-HS-2	Westhampton 1.8 SW	2.89"
0108020106	Manhan River - Connecticut River	MA-HS-26	Easthampton 0.5 SW	5.08"
0108020106	Manhan River - Connecticut River	MA-HS-12	Northampton 0.4 S	5.32"
0108020106	Manhan River - Connecticut River	MA-FR-12	Sunderland 1.3 SE	3.60"
0108020107	Batchelor Brook - Connecticut River	MA-HD-13	Springfield 4.1 W	1.29"
0108020107	Batchelor Brook - Connecticut River	MA-HD-23	Springfield 2.5 WNW	1.48"
01080202	Miller			
0108020201	Upper Millers River	NH-CH-20	Rindge 3.2 ESE	6.44"
0108020202	Lower Millers River	MA-FR-21	Millers Falls 0.2 SW	3.15"
0108020202	Lower Millers River	MA-WR-40	Gardner 1.4 SSW	4.17"
01080203	Deerfield			
0108020303	North River	MA-FR-31	Colrain 3.7 WNW	4.98"
0108020303	North River	MA-FR-29	Colrain 0.8 WNW	4.41"
0108020305	Lower Deerfield River	MA-FR-17	Buckland 1.8 ESE	5.73"
0108020305	Lower Deerfield River	MA-FR-13	Conway 2.9 NW	6.52"
0108020305	Lower Deerfield River	MA-FR-10	Conway 0.9 SW	4.45"
01080204	Chicopee			
0108020401	Swift River	MA-FR-8	New Salem 3.1 S	3.97"
0108020402	Ware River	MA-WR-54	Barre 1.4 NNE	4.72"
0108020403	Quaboag River	MA-HD-26	Brimfield 3.6 NW	2.56"
0108020403	Quaboag River	MA-WR-75	Warren 2.4 WSW	2.24"
0108020404	Chicopee River	MA-HD-25	Ludlow 2.3 SW	3.31"
01080205	Lower Connecticut			
0108020501	Mill River - Connecticut River	CT-HR-57	Suffield Depot 3.3 NNE	1.46"
0108020501	Mill River - Connecticut River	MA-HD-20	Wilbraham 3.7 SSW	2.51"
0108020501	Mill River - Connecticut River	MA-HD-30	Hampden 2.0 NW	1.79"
0108020502	Scantic River	CT-TL-26	Broad Brook 2.6 ESE	1.99"

0108020502	Scantic River	MA-HD-32	East Longmeadow 2.3 ESE	2.61"
0108020502	Scantic River	CT-TL-15	Central Somers 0.3 N	2.41"
0108020503	Park River	CT-HR-39	Farmington 1.6 SW	2.23"
0108020503	Park River	CT-HR-49	West Hartford 1.1 W	2.13"
0108020503	Park River	CT-HR-11	West Hartford 2.7 SSE	3.08"
0108020505	Roaring Brook - Connecticut River	CT-HR-6	Wethersfield 1.2 WSW	2.81"
0108020505	Roaring Brook - Connecticut River	CT-HR-45	Wethersfield 1.9 SSW	2.72"
0108020505	Roaring Brook - Connecticut River	CT-HR-68	Rocky Hill 1.3 E	2.90"
0108020505	Roaring Brook - Connecticut River	CT-HR-22	East Hartford 1.3 E	1.31"
0108020505	Roaring Brook - Connecticut River	CT-HR-7	Central Manchester 2.7 SW	1.43"
0108020506	Mattabesset River	CT-HR-15	Southington 3.0 E	1.69"
0108020506	Mattabesset River	CT-HR-80	Kensington 0.7 WSW	1.31"
0108020506	Mattabesset River	CT-HR-65	Newington 1.9 SSW	2.28"
0108020506	Mattabesset River	CT-MD-25	Middlefield 0.6 SE	2.68"
0108020507	Higganum Creek - Connecticut River	CT-MD-23	Higganum 0.7 N	2.75"
0108020507	Higganum Creek - Connecticut River	CT-MD-26	Higganum 0.8 NE	2.45"
0108020508	Salmon River	CT-MD-22	East Hampton 2.1 N	2.89"
01080206	Westfield			
0108020603	Outlet Westfield River	MA-HD-31	Westfield 1.6 SSW	2.71"
0108020603	Outlet Westfield River	MA-HD-28	Westfield 2.8 SE	2.45"
0108020603	Outlet Westfield River	MA-HD-29	West Springfield 1.6 SSW	1.66"
01080207	Farmington			
0108020701	Still River	CT-LT-15	Colebrook 1.0 NE	3.12"
0108020702	West Branch Farmington River	MA-BE-4	Becket 5.6 SSW	3.52"
0108020702	West Branch Farmington River	CT-LT-18	New Hartford Center 1.5 N	3.44"
0108020704	Headwaters Farmington River	CT-LT-9	New Hartford Center 3.2 SW	2.84"
0108020704	Headwaters Farmington River	CT-HR-70	Canton 1.5 W	2.84"
0108020704	Headwaters Farmington River	CT-HR-71	Bristol 2.7 NNE	1.84"
0108020704	Headwaters Farmington River	CT-HR-28	North Canton 0.8 SSW	2.84"
0108020705	Salmon Brook	CT-HR-60	North Granby 0.7 N	2.10"
0108020705	Salmon Brook	CT-HR-8	North Granby 1.3 ENE	1.95"
01090001	Charles			
0109000101	Plum Island Sound - Frontal Atlantic Ocean	MA-ES-46	Georgetown 1.3 ENE	5.63"
0109000101	Plum Island Sound - Frontal Atlantic Ocean	MA-ES-24	Newburyport 0.8 SW	3.82"
0109000102	Ipswich River	MA-MD-85	Wilmington 2.2 WNW	3.32"
0109000102	Ipswich River	MA-MD-125	Tewksbury 3.6 SSE	3.44"
0109000102	Ipswich River	MA-MD-45	Wilmington 1.5 NE	3.21"
0109000102	Ipswich River	MA-MD-160	Reading 1.2 N	2.28"
0109000102	Ipswich River	MA-ES-58	Middleton 1.4 SSW	2.55"
0109000102	Ipswich River	MA-ES-12	Boxford 2.4 S	4.76"
0109000103	Essex River - Frontal Atlantic Ocean	MA-ES-41	Danvers 0.8 ESE	2.29"

0109000103	Essex River - Frontal Atlantic Ocean	MA-ES-25	Gloucester 4.3 N	4.35"
0109000103	Essex River - Frontal Atlantic Ocean	MA-ES-22	Rockport 1.0 E	4.45"
0109000104	Saugus River - Frontal Broad Sound	MA-MD-126	Melrose 0.5 NE	3.19"
0109000104	Saugus River - Frontal Broad Sound	MA-ES-45	Nahant 0.4 N	1.91"
0109000104	Saugus River - Frontal Broad Sound	MA-ES-8	Marblehead 0.8 SW	2.72"
0109000105	Mystic River - Frontal Boston Harbor	MA-MD-123	Lexington 1.3 SE	1.76"
0109000105	Mystic River - Frontal Boston Harbor	MA-MD-18	Belmont 0.2 ESE	2.30"
0109000105	Mystic River - Frontal Boston Harbor	MA-MD-7	Winchester 0.7 SE	2.67"
0109000105	Mystic River - Frontal Boston Harbor	MA-MD-44	Medford 1.2 W	2.70"
0109000105	Mystic River - Frontal Boston Harbor	MA-MD-11	Cambridge 0.9 NNW	2.14"
0109000106	Upper Charles River	MA-WR-1	Milford 2.3 NNW	1.35"
0109000106	Upper Charles River	MA-MD-106	Holliston 2.4 W	1.57"
0109000106	Upper Charles River	MA-MD-55	Holliston 0.7 W	1.60"
0109000106	Upper Charles River	MA-MD-42	Holliston 0.8 S	1.87"
0109000106	Upper Charles River	MA-MD-158	Sherborn 1.1 NW	1.49"
0109000106	Upper Charles River	MA-NF-11	Millis 2.0 SW	2.54"
0109000106	Upper Charles River	MA-NF-50	Millis 1.4 ENE	1.46"
0109000107	Lower Charles River - Frontal Boston Harbor	MA-MD-120	Natick 1.9 NNE	2.30"
0109000107	Lower Charles River - Frontal Boston Harbor	MA-MD-80	Lincoln 1.5 SW	1.93"
0109000107	Lower Charles River - Frontal Boston Harbor	MA-MD-71	Newton 2.2 NNW	1.78"
0109000107	Lower Charles River - Frontal Boston Harbor	MA-MD-151	Cambridge 0.9 SSE	1.54"
0109000107	Lower Charles River - Frontal Boston Harbor	MA-MD-134	Somerville 0.5 SSE	1.65"
0109000108	Neponset River - Frontal Boston Harbor	MA-NF-1	Norwood 1.3 NW	1.90"
0109000108	Neponset River - Frontal Boston Harbor	MA-NF-54	Quincy 1.2 W	1.55"
0109000109	Whitmans Pond - Frontal Boston Harbor	MA-NF-32	Quincy 1.8 WSW	1.61"
0109000109	Whitmans Pond - Frontal Boston Harbor	MA-PL-36	Hingham 0.8 ESE	1.00"
01090002	Cape Cod			
0109000201	North River - Frontal Massachusetts Bay	MA-PL-5	Kingston 3.3 WNW	2.55"
0109000201	North River - Frontal Massachusetts Bay	MA-PL-37	Scituate 1.2 NW	1.23"
0109000201	North River - Frontal Massachusetts Bay	MA-PL-30	Duxbury 3.7 W	1.57"
0109000201	North River - Frontal Massachusetts Bay	MA-PL-47	Plymouth 1.1 NNW	1.62"
0109000201	North River - Frontal Massachusetts Bay	MA-PL-2	Sagamore Beach 1.0 NW	2.32"
0109000202	Cape Cod	MA-BA-2	Falmouth 3.1 NNW	0.51"
0109000202	Cape Cod	MA-BA-14	North Falmouth 0.5 ENE	0.48"
0109000202	Cape Cod	MA-BA-13	Falmouth 0.6 NNW	0.43"
0109000202	Cape Cod	MA-BA-50	Falmouth 5.4 NNE	0.82"
0109000202	Cape Cod	MA-BA-17	East Falmouth 1.2 WNW	0.69"
0109000202	Cape Cod	MA-BA-19	East Falmouth 0.7 NW	0.79"
0109000202	Cape Cod	MA-BA-3	Falmouth 3.0 E	0.39"
0109000202	Cape Cod	MA-BA-11	East Falmouth 1.4 ESE	0.43"
0109000202	Cape Cod	MA-BA-18	Waquoit 0.6 SSW	0.66"

0109000202	Cape Cod	MA-BA-45	Sandwich 0.9 NNE	1.23"
0109000202	Cape Cod	MA-BA-64	Sandwich 1.5 SSE	1.08"
0109000202	Cape Cod	MA-BA-79	Mashpee 0.8 SSW	0.58"
0109000202	Cape Cod	MA-BA-78	Mashpee 4.6 S	0.63"
0109000202	Cape Cod	MA-BA-10	East Sandwich 2.3 SE	0.65"
0109000202	Cape Cod	MA-BA-59	Barnstable 3.6 W	1.11"
0109000202	Cape Cod	MA-BA-76	Barnstable 0.7 NE	0.84"
0109000202	Cape Cod	MA-BA-22	Yarmouth 0.9 NNW	1.09"
0109000202	Cape Cod	MA-BA-72	Yarmouth 2.0 S	1.23"
0109000202	Cape Cod	MA-BA-1	Yarmouth 2.3 SSE	1.53"
0109000202	Cape Cod	MA-BA-77	South Dennis 1.0 NW	1.55"
0109000202	Cape Cod	MA-BA-80	Brewster 1.4 W	1.01"
0109000202	Cape Cod	MA-BA-52	Truro 0.8 E	1.15"
0109000202	Cape Cod	MA-BA-27	Wellfleet 0.7 NW	0.84"
0109000202	Cape Cod	MA-BA-36	Harwich 2.6 ENE	0.81"
0109000202	Cape Cod	MA-BA-68	Eastham 1.9 WSW	0.88"
0109000202	Cape Cod	MA-BA-42	Orleans 1.8 S	2.47"
0109000202	Cape Cod	MA-BA-51	Orleans 3.0 S	1.00"
0109000202	Cape Cod	MA-BA-12	Orleans 1.1 E	0.81"
0109000202	Cape Cod	MA-BA-43	Chatham 0.4 WSW	0.91"
0109000202	Cape Cod	MA-BA-65	Chatham 0.2 SSE	0.80"
0109000204	Paskamanset River - Frontal Buzzards Bay	MA-BR-14	Dartmouth 2.5 SSW	0.53"
0109000204	Paskamanset River - Frontal Buzzards Bay	MA-BR-52	New Bedford 4.3 N	0.67"
0109000205	Sakonnet Point - Frontal Rhode Island Sound	RI-NW-5	Little Compton 1.7 NW	1.01"
0109000205	Sakonnet Point - Frontal Rhode Island Sound	RI-NW-17	Tiverton 4.4 SSE	0.61"
0109000205	Sakonnet Point - Frontal Rhode Island Sound	RI-NW-7	Little Compton 0.6 E	0.85"
0109000206	Elizabeth Islands - Marthas Vineyard	MA-DK-14	Naushon Island 3.0 NE	0.38"
0109000206	Elizabeth Islands - Marthas Vineyard	MA-DK-5	West Tisbury 2.9 N	0.46"
0109000206	Elizabeth Islands - Marthas Vineyard	MA-DK-9	West Tisbury 0.4 S	0.20"
0109000206	Elizabeth Islands - Marthas Vineyard	MA-DK-2	Vineyard Haven 0.8 WSW	0.43"
0109000206	Elizabeth Islands - Marthas Vineyard	MA-DK-18	Oak Bluffs 0.1 SW	0.43"
0109000207	Nantucket Island	MA-NT-6	Nantucket 0.6 SSE	0.47"
01090003	Blackstone			
0109000301	Upper Blackstone River	MA-WR-41	Auburn 2.6 SW	2.67"
0109000301	Upper Blackstone River	MA-WR-43	Leicester 2.4 ESE	1.56"
0109000301	Upper Blackstone River	MA-WR-81	Worcester 1.6 SE	1.44"
0109000301	Upper Blackstone River	MA-WR-70	Grafton 1.5 W	1.40"
0109000302	Lower Blackstone River	RI-PR-50	Harrisville 1.2 SSE	2.12"
0109000302	Lower Blackstone River	RI-PR-28	North Smithfield 0.7 SE	2.42"
0109000302	Lower Blackstone River	RI-PR-89	Woonsocket 1.8 WNW	2.77"
0109000302	Lower Blackstone River	RI-PR-45	Manville 0.4 WSW	2.27"

0109000302	Lower Blackstone River	RI-PR-55	Cumberland Hill 3.6 NNE	1.12"
01090004	Narragansett			
0109000401	Upper Taunton River	MA-BR-30	Taunton 3.9 N	1.29"
0109000401	Upper Taunton River	MA-NF-31	Stoughton 1.2 E	2.03"
0109000401	Upper Taunton River	MA-PL-22	East Bridgewater 0.3 WSW	1.47"
0109000401	Upper Taunton River	MA-PL-15	Abington 1.2 NNE	1.10"
0109000401	Upper Taunton River	MA-PL-23	Pembroke 2.8 SW	1.00"
0109000402	Middle Taunton River	MA-PL-31	Bridgewater 1.8 SE	2.99"
0109000402	Middle Taunton River	MA-PL-17	Plympton 0.9 NNE	1.95"
0109000403	Threemile River	MA-BR-55	NWS Boston/Norton 2.5 ESE	1.40"
0109000404	Ten Mile River	MA-NF-58	Plainville 0.6 NNW	2.00"
0109000404	Ten Mile River	MA-BR-23	Attleboro 0.9 ENE	2.66"
0109000405	Woonasquatucket River-Moshassuck River	RI-PR-33	Greenville 0.7 NNW	1.91"
0109000405	Woonasquatucket River-Moshassuck River	RI-PR-51	North Smithfield 0.6 S	2.01"
0109000405	Woonasquatucket River-Moshassuck River	RI-PR-82	Providence 1.6 NNW	2.46"
0109000405	Woonasquatucket River-Moshassuck River	RI-PR-53	Providence 1.7 N	2.04"
0109000406	Pawtuxet River	RI-KN-21	Coventry 1.9 NE	1.37"
0109000406	Pawtuxet River	RI-PR-57	Cranston 1.2 SSE	2.38"
0109000407	Palmer River	MA-BR-2	Rehoboth 2.1 N	2.80"
0109000408	Lower Taunton River - Frontal Mount Hope Bay	MA-BR-61	Mansfield 2.4 ENE	3.91"
0109000408	Lower Taunton River - Frontal Mount Hope Bay	MA-BR-16	Somerset 0.4 SSE	1.13"
0109000408	Lower Taunton River - Frontal Mount Hope Bay	MA-BR-58	Dighton 3.3 NNW	1.32"
0109000408	Lower Taunton River - Frontal Mount Hope Bay	MA-BR-8	Dighton 1.1 WSW	1.66"
0109000409	Narragansett Bay	RI-KN-17	East Greenwich 1.2 NNE	1.72"
0109000409	Narragansett Bay	RI-WS-54	North Kingstown 2.7 WSW	3.23"
0109000409	Narragansett Bay	RI-WS-31	Kingston 7.5 NNE	3.52"
0109000409	Narragansett Bay	RI-KN-15	Warwick 4.3 SSW	2.78"
0109000409	Narragansett Bay	RI-KN-2	East Greenwich 2.3 ESE	1.97"
0109000409	Narragansett Bay	RI-KN-23	Warwick 3.2 NNE	1.67"
0109000409	Narragansett Bay	RI-KN-31	Warwick 0.8 ENE	1.66"
0109000409	Narragansett Bay	RI-PR-67	Providence 1.6 NE	1.86"
0109000409	Narragansett Bay	RI-PR-84	Providence 2.7 NNE	1.80"
0109000409	Narragansett Bay	RI-PR-77	Riverside 0.8 SE	1.61"
0109000409	Narragansett Bay	RI-BR-5	Barrington 1.3 WNW	2.42"
0109000409	Narragansett Bay	RI-NW-27	Newport 1.3 SW	1.68"
0109000409	Narragansett Bay	RI-NW-4	Middletown 1.1 SW	1.98"
0109000409	Narragansett Bay	RI-NW-19	Portsmouth 2.3 S	0.81"
0109000409	Narragansett Bay	RI-NW-16	Portsmouth 1.3 S	0.88"
0109000409	Narragansett Bay	MA-BR-63	Swansea 2.1 W	1.66"
01090005	Pawcatuck-Wood			
0109000501	Wood River	RI-WS-64	Hope Valley 1.8 NE	2.00"

0109000502	Upper Pawcatuck River	RI-WS-46	Westerly 3.4 E	1.12"
0109000502	Upper Pawcatuck River	RI-WS-51	Richmond 2.4 SSE	1.01"
0109000502	Upper Pawcatuck River	RI-WS-42	Richmond 4.6 NNE	1.08"
0109000502	Upper Pawcatuck River	RI-WS-45	Charlestown 4.7 NNE	2.13"
0109000502	Upper Pawcatuck River	RI-WS-37	Kingston 2.4 SW	2.78"
0109000503	Lower Pawcatuck River	CT-NL-40	Pawcatuck 1.8 SSE	0.89"
0109000503	Lower Pawcatuck River	RI-WS-30	Westerly 2.4 NNW	0.98"
0109000503	Lower Pawcatuck River	RI-WS-47	Westerly 0.8 WNW	0.94"
0109000504	Frontal Block Island Sound	RI-WS-36	Charlestown 3.0 WSW	1.54"
0109000504	Frontal Block Island Sound	RI-WS-53	Charlestown 0.7 SE	1.17"
0109000504	Frontal Block Island Sound	RI-WS-58	Kingston 0.3 SW	2.91"
0109000504	Frontal Block Island Sound	RI-WS-55	Wakefield 0.8 ENE	2.42"
01100001	Quinebaug			
0110000102	French River	MA-WR-68	Oxford 0.9 SSW	1.56"
0110000103	Fivemile River	CT-WN-6	Dayville 2.0 ENE	1.96"
0110000103	Fivemile River	CT-WN-4	East Killingly 1.3 SW	1.53"
0110000105	Moosup River	CT-WN-8	Moosup 1.7 NE	1.52"
0110000105	Moosup River	RI-KN-33	Greene 1.4 E	1.54"
0110000106	Pachaug River	CT-NL-21	Griswold 0.9 N	1.62"
01100002	Shetucket			
0110000201	Willimantic River	CT-TL-18	Hebron 5.3 NW	2.08"
0110000201	Willimantic River	CT-TL-40	Coventry 0.3 NNE	2.64"
0110000201	Willimantic River	CT-TL-32	Coventry 2.3 N	2.81"
0110000201	Willimantic River	CT-TL-7	Columbia 2.2 SSW	1.31"
0110000201	Willimantic River	CT-TL-2	Staffordville 0.4 NNW	1.86"
0110000202	Natchaug River	CT-TL-27	Willington 2.7 SE	7.85"
0110000202	Natchaug River	CT-TL-30	Mansfield Center 2.7 NE	1.91"
0110000202	Natchaug River	CT-WN-12	Eastford 2.0 W	6.69"
0110000203	Shetucket River	CT-NL-10	Norwich 2.5 NNE	2.12"
01100003	Thames			
0110000302	Thames River-Frontal New London Harbor	CT-NL-6	New London 1.0 NNW	1.69"
0110000302	Thames River-Frontal New London Harbor	CT-NL-8	Uncasville-Oxoboxo Valley 1.6 ENE	2.72"
0110000303	Mystic River - Frontal Fishers Island Sound	CT-NL-38	Old Lyme 3.4 ESE	2.97"
0110000303	Mystic River - Frontal Fishers Island Sound	CT-NL-29	East Lyme 0.5 SW	4.01"
0110000303	Mystic River - Frontal Fishers Island Sound	CT-NL-32	Niantic 1.1 SW	3.29"
0110000303	Mystic River - Frontal Fishers Island Sound	CT-NL-22	Central Waterford 2.7 SSW	1.65"
0110000303	Mystic River - Frontal Fishers Island Sound	CT-NL-46	Mystic 3.4 NW	1.35"
0110000303	Mystic River - Frontal Fishers Island Sound	CT-NL-37	Mystic 1.6 W	1.61"
0110000303	Mystic River - Frontal Fishers Island Sound	CT-NL-19	Mystic 0.9 W	1.39"
0110000303	Mystic River - Frontal Fishers Island Sound	CT-NL-24	Stonington 1.4 NNW	1.20"
0110000303	Mystic River - Frontal Fishers Island Sound	CT-NL-18	Stonington 0.5 NNE	1.71"

01100004	Quinnipiac			
0110000401	Quinnipiac River	CT-HR-55	Southington 1.7 WNW	1.21"
0110000401	Quinnipiac River	CT-HR-83	Plainville 1.7 SW	1.39"
0110000401	Quinnipiac River	CT-HR-23	Southington 0.9 SSE	1.48"
0110000401	Quinnipiac River	CT-HR-76	Southington 1.0 ENE	1.43"
0110000401	Quinnipiac River	CT-NH-44	Wallingford Center 1.9 WNW	2.61"
0110000401	Quinnipiac River	CT-NH-43	Wallingford Center 3.3 NNW	2.45"
0110000401	Quinnipiac River	CT-NH-42	Wallingford Center 1.1 N	2.86"
0110000401	Quinnipiac River	CT-NH-72	Northford 0.8 SW	4.74"
0110000402	Hammonasset River - Frontal Long Island Sound	CT-NH-21	East Haven 3.5 SSW	4.37"
0110000402	Hammonasset River - Frontal Long Island Sound	CT-NH-56	Guilford Center 2.7 WSW	5.86"
0110000402	Hammonasset River - Frontal Long Island Sound	CT-NH-50	Madison Center 4.1 N	3.98"
0110000402	Hammonasset River - Frontal Long Island Sound	CT-MD-21	Killingworth 2.6 ESE	4.09"
0110000403	Mill River - Frontal Long Island Sound	CT-NH-39	West Haven 0.8 W	4.67"
0110000403	Mill River - Frontal Long Island Sound	CT-NH-57	New Haven 2.9 NNW	2.68"
01100005	Housatonic			
0110000501	Headwaters Housatonic River	MA-BE-11	Great Barrington 3.0 N	2.64"
0110000502	Williams River - Housatonic River	MA-BE-23	Sheffield 1.6 NW	2.52"
0110000503	Konkapot River-Housatonic River	CT-LT-28	Canaan 4.2 ESE	2.15"
0110000504	Macedonia Brook - Housatonic River	CT-LT-20	Warren 2.4 WNW	2.84"
0110000506	Candlewood Lake-Housatonic River	CT-LT-37	New Milford 3.1 WNW	2.59"
0110000506	Candlewood Lake-Housatonic River	CT-LT-22	New Milford 5.3 SSW	4.40"
0110000508	Still River - Housatonic River	CT-FR-43	Bethel 0.5 E	7.23"
0110000508	Still River - Housatonic River	CT-FR-41	Bethel 3.5 NNE	7.80"
0110000508	Still River - Housatonic River	CT-FR-9	Brookfield 3.3 SSE	7.86"
0110000509	Pomperaug River	CT-LT-34	Woodbury Center 1.5 SSW	4.98"
0110000511	Headwaters Naugatuck River	CT-LT-7	Litchfield 2.3 NNE	1.98"
0110000512	Outlet Naugatuck River	CT-NH-47	Seymour 1.5 NE	2.74"
0110000512	Outlet Naugatuck River	CT-NH-45	Naugatuck 1.7 NNE	3.59"
0110000512	Outlet Naugatuck River	CT-NH-22	Prospect 0.5 SW	2.89"
0110000513	Housatonic River - Frontal Long Island Sound	CT-FR-42	Monroe 0.1 SE	4.60"
0110000513	Housatonic River - Frontal Long Island Sound	CT-FR-77	Shelton 2.3 WSW	5.06"
0110000513	Housatonic River - Frontal Long Island Sound	CT-FR-23	Shelton 1.3 W	4.38"
0110000513	Housatonic River - Frontal Long Island Sound	CT-FR-46	Stratford 0.2 ESE	5.25"
01100006	Saugatuck			
0110000601	Saugatuck River - Frontal Long Island Sound	CT-FR-58	Ridgefield 3.6 N	6.36"
0110000601	Saugatuck River - Frontal Long Island Sound	CT-FR-64	Bethel 4.5 SSE	5.42"
0110000601	Saugatuck River - Frontal Long Island Sound	CT-FR-31	Newtown 4.6 SSW	6.56"
0110000602	Norwalk River - Frontal Norwalk Harbor	CT-FR-59	New Canaan 3.8 N	5.31"
0110000602	Norwalk River - Frontal Norwalk Harbor	CT-FR-29	Ridgefield 1.9 SSE	6.62"
0110000602	Norwalk River - Frontal Norwalk Harbor	CT-FR-63	Wilton 1.9 NW	4.65"

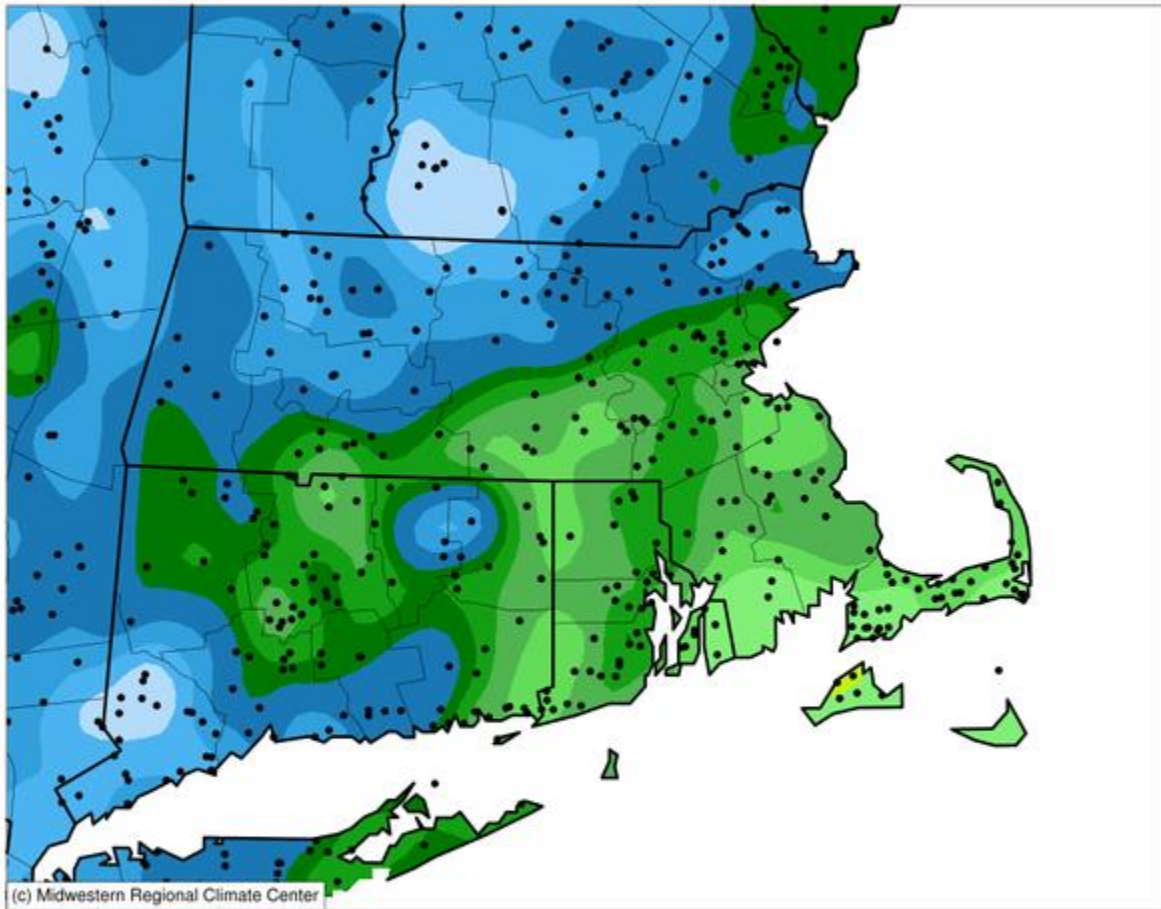
0110000602	Norwalk River - Frontal Norwalk Harbor	CT-FR-3	New Canaan 1.9 ENE	4.65"
0110000602	Norwalk River - Frontal Norwalk Harbor	CT-FR-25	Norwalk 2.9 NNW	4.80"
0110000603	Pequonnock River - Frontal Long Island Sound	CT-FR-84	Westport 3.8 ENE	4.34"
0110000603	Pequonnock River - Frontal Long Island Sound	CT-FR-60	Fairfield 1.5 NE	4.81"
0110000603	Pequonnock River - Frontal Long Island Sound	CT-FR-32	Monroe 0.8 W	7.13"
0110000603	Pequonnock River - Frontal Long Island Sound	CT-FR-81	Bridgeport 1.2 NNW	5.58"
0110000603	Pequonnock River - Frontal Long Island Sound	CT-FR-67	Trumbull 1.2 S	6.87"
0110000603	Pequonnock River - Frontal Long Island Sound	CT-FR-26	Stratford 0.9 W	6.22"
0110000604	Mianus River-Rippowam River	CT-FR-83	Darien 2.4 NW	5.11"
0110000604	Mianus River-Rippowam River	CT-FR-35	Darien 1.8 ENE	4.78"
02020003	Hudson-Hoosic			
0202000306	Upper Hoosic River	MA-BE-21	Cheshire 0.5 NNW	3.92"
02030203	Long Island Sound			
0203020300	Long Island Sound	NY-SF-114	Fishers Island 0.5 NE	1.41"

A few patches of over 6". Green is under 3", with the lowest amounts around Cape Cod.

A dry month for much of us. The variable nature of precipitation is there to see during these summer months.

Accumulated Precipitation (in)

July 01, 2020 to July 31, 2020



0.01 0.1 0.25 0.5 1 1.5 2 2.5 3 4 5 6 8

Stations from the following networks used: COOP, FAA, CoCoRaHS,

Midwestern Regional Climate Center

cli-MATE: MRCC Application Tools Environment

Generated at: 8/10/2020 10:02:09 PM CDT

“We do not live at the airport”

The variable nature of precipitation appears in these stations, too. This list averaged 2.37”, while our own stations average 2.60”, which is drier than our normal of around 4”.

Our network does not use automated gauges! And we do not live at the airport!

Location	Station ID	July 2020 Precip	July departure from normal	May-June-July Precip	3 month departure from normal	Feb-July Precip	6 month departure from normal	Aug-July Precip	12 month departure from normal
White Plains NY	HPN	5.68"	1.97"	9.42"	-2.66"	20.13"	-3.86"	41.51"	-7.84"
Danbury CT	DXR	6.07"	1.49"	10.15"	-3.35"	19.89"	-4.72"	39.50"	-10.37"
New Haven CT	HVN	3.06"	-0.95"	6.95"	-5.25"	18.85"	-4.97"	39.29"	-7.82"
Meriden CT	MMK	2.09"	-1.92"	8.20"	-4.00"	23.46"	-0.36"	48.56"	1.45"
Hartford CT	HFD	3.54"	-0.46"	7.30"	-4.58"	18.75"	-3.23"	39.33"	-4.27"
Willimantic CT	IJD	1.88"	-2.21"	10.26"	-1.87"	21.10"	-2.86"	43.25"	-5.17"
New London CT	GON	1.38"	-2.39"	6.42"	-5.31"	18.26"	-4.90"	40.40"	-6.09"
Westerly RI	WST	0.98"	-2.81"	7.53"	-3.73"	17.71"	-6.02"	41.17"	-6.22"
Newport RI	UUU	2.06"	-1.39"	6.34"	-4.45"	18.53"	-4.46"	36.32"	-10.01"
New Bedford MA	EWB	0.41"	-2.91"	4.91"	-6.05"	12.16"	-11.85"	30.75"	-17.61"
Hyannis MA	HYA	0.93"	-2.31"	4.98"	-5.31"	16.58"	-6.71"	42.27"	-5.42"
Nantucket MA	ACK	0.00"	-3.09"	5.66"	-4.34"	16.37"	-4.34"	38.32"	-6.10"
Marthas Vineyard MA	MVY	0.50"	-2.41"	7.30"	-2.24"	19.50"	-1.64"	44.71"	-0.45"
Taunton MA	TAN	1.49"	-2.26"	7.58"	-3.39"	20.51"	-3.74"	42.49"	-7.25"
Plymouth MA	PYM	2.33"	-1.16"	6.49"	-4.64"	20.62"	-4.00"	49.24"	0.09"
Norwood MA	OWD	2.17"	-1.61"	11.01"	-0.40"	25.53"	2.23"	45.18"	-1.88"
Bedford MA	BED	2.49"	-1.23"	5.80"	-5.69"	16.15"	-6.69"	36.13"	-9.58"
Beverly MA	BVY	0.52"	-3.34"	4.65"	-6.65"	17.66"	-5.85"	38.77"	-7.41"
Lawrence MA	LWM	4.09"	0.42"	8.15"	-3.35"	20.04"	-2.19"	41.14"	-2.02"
Fitchburg MA	FIT	2.94"	-1.14"	6.72"	-5.67"	18.51"	-5.38"	31.57"	-15.57"
Orange MA	ORE	4.58"	0.45"	7.96"	-4.44"	18.89"	-2.96"	38.61"	-3.94"
Westfield MA	BAF	2.28"	-1.81"	5.66"	-7.22"	17.11"	-7.07"	37.77"	-10.62"
North Adams MA	AQW	3.09"	-1.46"	6.50"	-7.12"	15.32"	-8.25"	33.48"	-13.13"

Rulers of the Snow

We are the Rulers of the Snow. We define where the snow is and where it is not.

For the hottest month of the year, these are the group of stations that reported snow fall and snow depth for all days in July 2020. A network leading 82 stations. Even on Marthas Vineyard and on Fishers Island!

Keep making this list even longer. Using the mobile app? Look at the 2nd page of the mobile app, and fill in those snow values. Make a snow fall and snow depth measurement with every Daily Report, if you can safely do so, ***all year round.***

Station	Name	Jul 2020 Snowfall	Station	Name	Jul 2020 Snowfall
MA-BE-21	Cheshire 0.5 NNW	0.0"	RI-PR-82	Providence 1.6 NNW	0.0"
CT-LT-15	Colebrook 1.0 NE	0.0"	RI-KN-2	East Greenwich 2.3 ESE	0.0"
CT-LT-22	New Milford 5.3 SSW	0.0"	RI-KN-33	Greene 1.4 E	0.0"
CT-LT-34	Woodbury Center 1.5 SSW	0.0"	RI-WS-31	Kingston 7.5 NNE	0.0"
CT-LT-9	New Hartford Center 3.2 SW	0.0"	RI-WS-37	Kingston 2.4 SW	0.0"
CT-FR-25	Norwalk 2.9 NNW	0.0"	RI-WS-42	Richmond 4.6 NNE	0.0"
CT-FR-3	New Canaan 1.9 ENE	0.0"	RI-WS-47	Westerly 0.8 WNW	0.0"
CT-FR-9	Brookfield 3.3 SSE	0.0"	RI-WS-55	Wakefield 0.8 ENE	0.0"
CT-NH-43	Wallingford Center 3.3 NNW	0.0"	RI-NW-7	Little Compton 0.6 E	0.0"
CT-NH-57	New Haven 2.9 NNW	0.0"	MA-BR-23	Attleboro 0.9 ENE	0.0"
MA-FR-10	Conway 0.9 SW	0.0"	MA-BR-55	NWS Boston/Norton 2.5 ESE	0.0"
MA-FR-13	Conway 2.9 NW	0.0"	MA-MD-115	Hudson 1.4 NW	0.0"
MA-FR-17	Buckland 1.8 ESE	0.0"	MA-MD-12	Acton 1.3 SW	0.0"
MA-FR-31	Colrain 3.7 WNW	0.0"	MA-MD-125	Tewksbury 3.6 SSE	0.0"
MA-HD-25	Ludlow 2.3 SW	0.0"	MA-MD-126	Melrose 0.5 NE	0.0"
MA-HD-30	Hampden 2.0 NW	0.0"	MA-MD-156	Marlborough 2.8 ENE	0.0"
CT-HR-11	West Hartford 2.7 SSE	0.0"	MA-MD-44	Medford 1.2 W	0.0"
CT-HR-22	East Hartford 1.3 E	0.0"	MA-MD-47	West Townsend 0.5 W	0.0"
CT-HR-57	Suffield Depot 3.3 NNE	0.0"	MA-MD-51	Maynard 0.7 ESE	0.0"
CT-HR-8	North Granby 1.3 ENE	0.0"	MA-MD-62	Chelmsford 1.2 E	0.0"
CT-TL-18	Hebron 5.3 NW	0.0"	MA-MD-7	Winchester 0.7 SE	0.0"
CT-TL-2	Staffordville 0.4 NNW	0.0"	MA-MD-85	Wilmington 2.2 WNW	0.0"

CT-TL-27	Willington 2.7 SE	0.0"	MA-ES-12	Boxford 2.4 S	0.0"
CT-MD-21	Killingworth 2.6 ESE	0.0"	MA-ES-4	Groveland 0.5 WSW	0.0"
CT-MD-23	Higganum 0.7 N	0.0"	MA-ES-41	Danvers 0.8 ESE	0.0"
MA-WR-42	Northborough 2.3 N	0.0"	MA-ES-48	Andover 0.6 E	0.0"
MA-WR-54	Barre 1.4 NNE	0.0"	MA-NF-1	Norwood 1.3 NW	0.0"
MA-WR-75	Warren 2.4 WSW	0.0"	MA-NF-11	Millis 2.0 SW	0.0"
MA-WR-8	Fitchburg 1.6 SSW	0.0"	MA-NF-54	Quincy 1.2 W	0.0"
CT-WN-8	Moosup 1.7 NE	0.0"	MA-NF-58	Plainville 0.6 NNW	0.0"
CT-NL-10	Norwich 2.5 NNE	0.0"	MA-PL-15	Abington 1.2 NNE	0.0"
CT-NL-19	Mystic 0.9 W	0.0"	MA-PL-36	Hingham 0.8 ESE	0.0"
CT-NL-21	Griswold 0.9 N	0.0"	MA-BA-14	North Falmouth 0.5 ENE	0.0"
CT-NL-29	East Lyme 0.5 SW	0.0"	MA-BA-2	Falmouth 3.1 NNW	0.0"
CT-NL-32	Niantic 1.1 SW	0.0"	MA-BA-3	Falmouth 3.0 E	0.0"
CT-NL-46	Mystic 3.4 NW	0.0"	MA-BA-50	Falmouth 5.4 NNE	0.0"
CT-NL-6	New London 1.0 NNW	0.0"	MA-BA-64	Sandwich 1.5 SSE	0.0"
RI-PR-28	North Smithfield 0.7 SE	0.0"	MA-BA-72	Yarmouth 2.0 S	0.0"
RI-PR-33	Greenville 0.7 NNW	0.0"	MA-BA-76	Barnstable 0.7 NE	0.0"
RI-PR-45	Manville 0.4 WSW	0.0"	MA-DK-2	Vineyard Haven 0.8 WSW	0.0"
RI-PR-51	North Smithfield 0.6 S	0.0"	NY-SF-114	Fishers Island 0.5 NE	0.0"

July 2020 as a calendar. A count of your Daily Reports by Date. Magenta colors are for the highest counts. Lime green color for the lowest counts.

385 Reports per Day was our record reporting average for July. A few days of 400 Daily Reports. 419 Daily Reports for July 11th is a single day reporting record for us.

July 2020

Sun	Mon	Tue	Wed	Thu	Fri	Sat
			1 404	2 394	3 380	4 387
5 374	6 386	7 376	8 385	9 387	10 379	11 419
12 381	13 386	14 391	15 392	16 381	17 392	18 379
19 365	20 380	21 363	22 377	23 402	24 402	25 374
26 380	27 377	28 381	29 387	30 383	31 400	

D0 is starting to go away and Isaias may not bring much of it back. D1 & D2 are creeping in slowly

Keep monitoring and reporting Conditions where you are.

Every drop counts and zeros do too!

U.S. Drought Monitor Northeast RFC

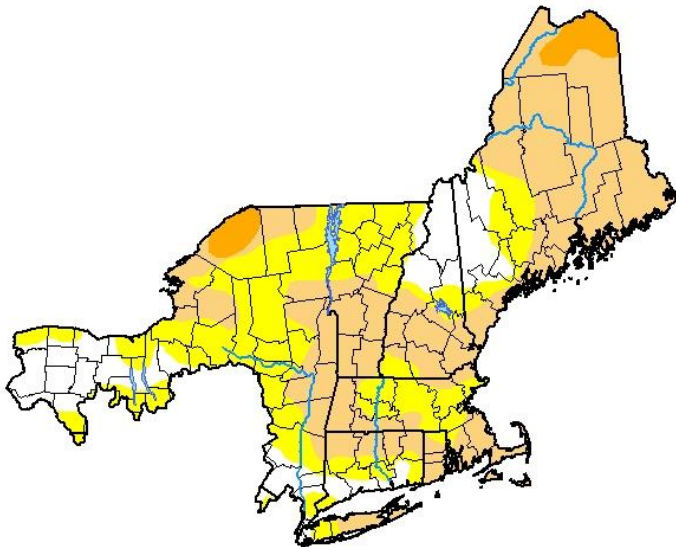
August 4, 2020

(Released Thursday, Aug. 6, 2020)

Valid 8 a.m. EDT

Drought Conditions (Percent Area)

	None	D0	D1	D2	D3	D4
Current	15.93	33.57	47.13	3.37	0.00	0.00
Last Week <i>07-28-2020</i>	15.87	36.31	44.46	3.37	0.00	0.00
3 Months Ago <i>05-05-2020</i>	100.00	0.00	0.00	0.00	0.00	0.00
Start of Calendar Year <i>12-31-2019</i>	100.00	0.00	0.00	0.00	0.00	0.00
Start of Water Year <i>10-01-2019</i>	66.91	33.09	0.00	0.00	0.00	0.00
One Year Ago <i>08-06-2019</i>	95.47	4.53	0.00	0.00	0.00	0.00



Intensity:

- None
- D0 Abnormally Dry
- D1 Moderate Drought
- D2 Severe Drought
- D3 Extreme Drought
- D4 Exceptional Drought

The Drought Monitor focuses on broad-scale conditions. Local conditions may vary. For more information on the Drought Monitor, go to <https://droughtmonitor.unl.edu/About.aspx>

Author:

Brian Fuchs
National Drought Mitigation Center



droughtmonitor.unl.edu

For a viewing explanation on the Drought Monitor, the CoCoRaHS animated video is on [YouTube](#).

Wrap up

Travel options are limited this year so get outside on a clear night and take in the stars. The Perseids meteor shower peaks this week. Take in the Summer Triangle on a star lit night. Enjoy the rest of these warm weather and sunlight months. We are losing daylight.

Thank you for all that you do for CoCoRaHS, whether in the past, present and in the days to come.