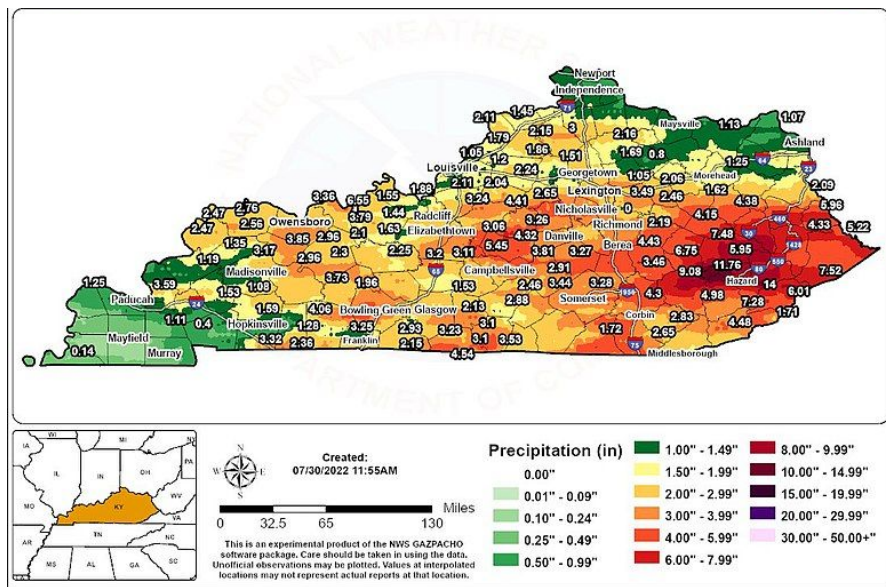
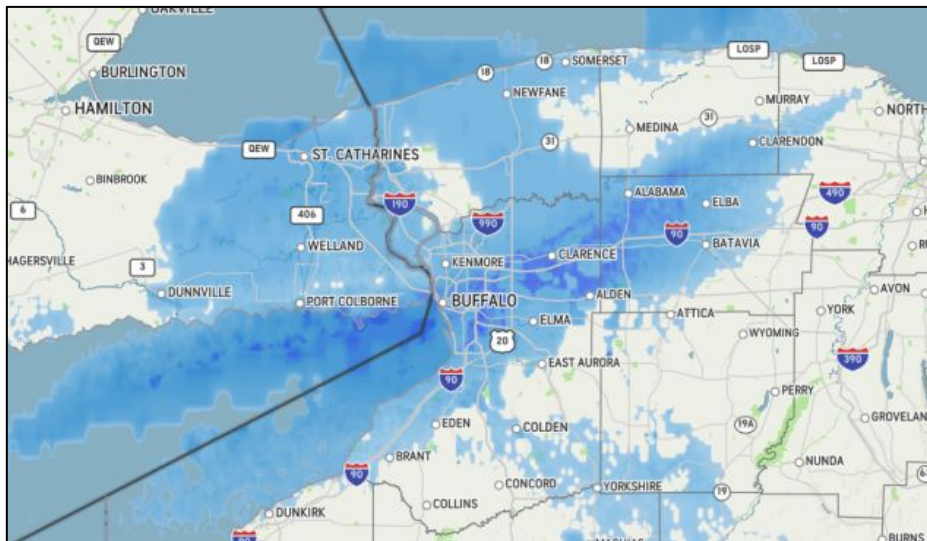


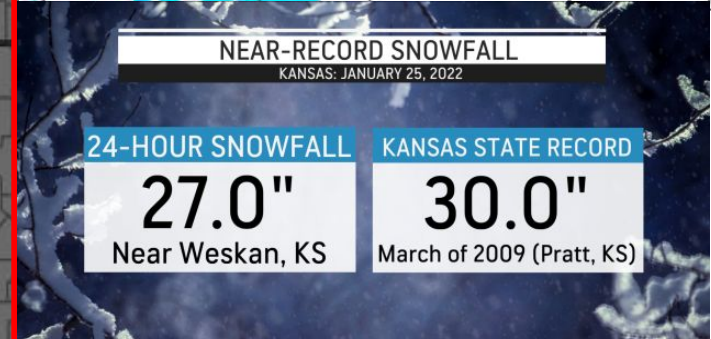
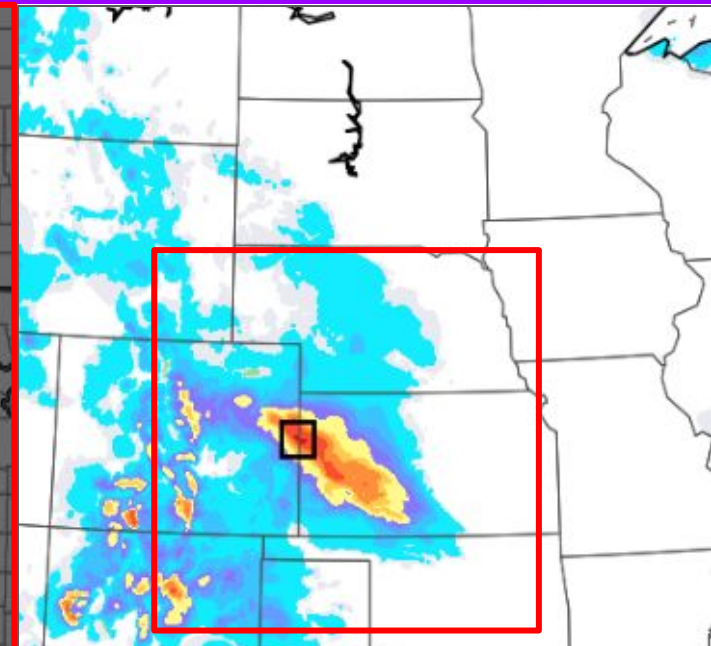
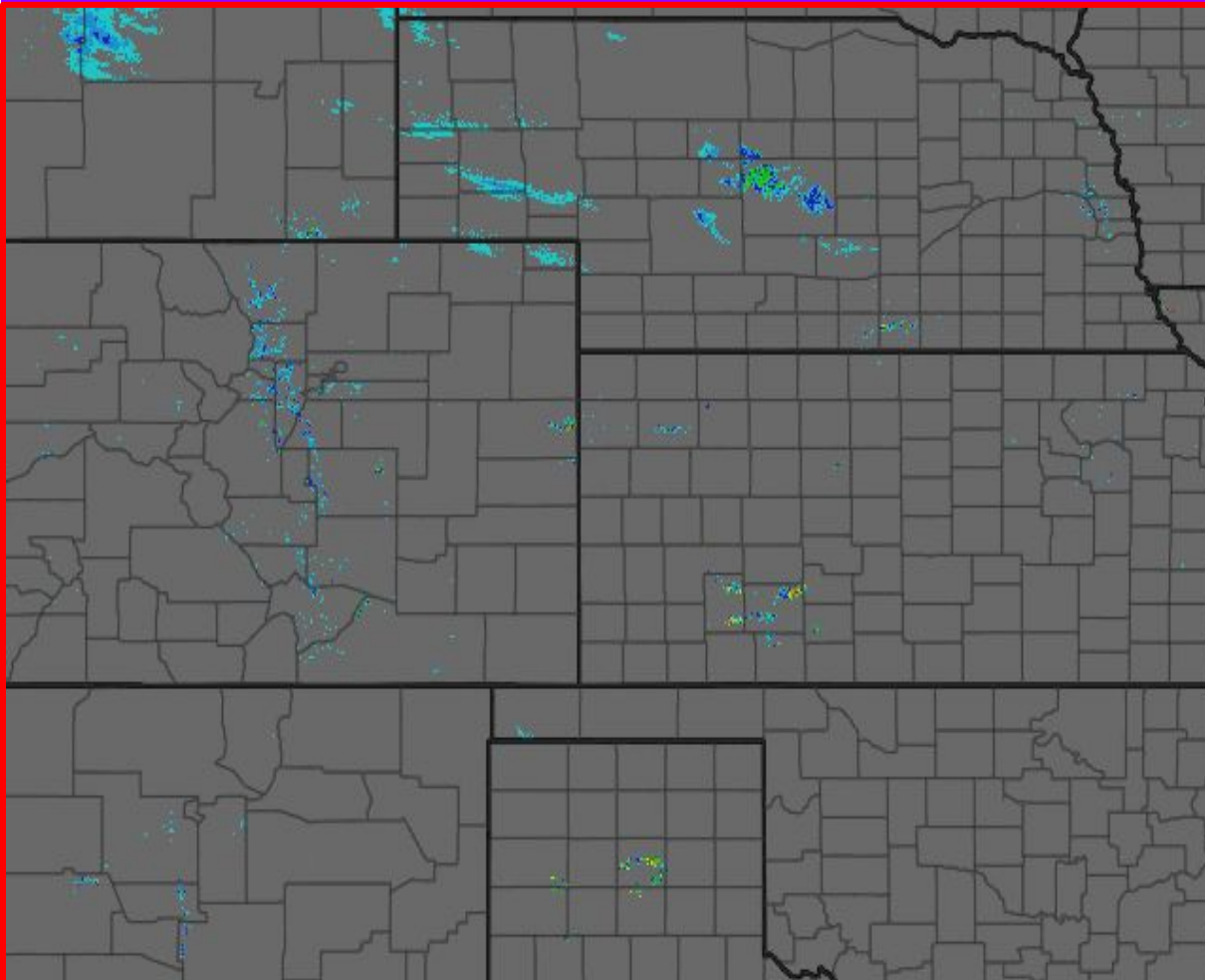
Meteorological



Memories

Greg Carbin
NWS Weather Prediction Center, Chief of Forecast Operations
College Park, Maryland
@GCarbin

1 - 2022: Jan. 25, Sneak Attack Snow in Kansas



NEAR-RECORD SNOWFALL

KANSAS: JANUARY 25, 2022

24-HOUR SNOWFALL

27.0"

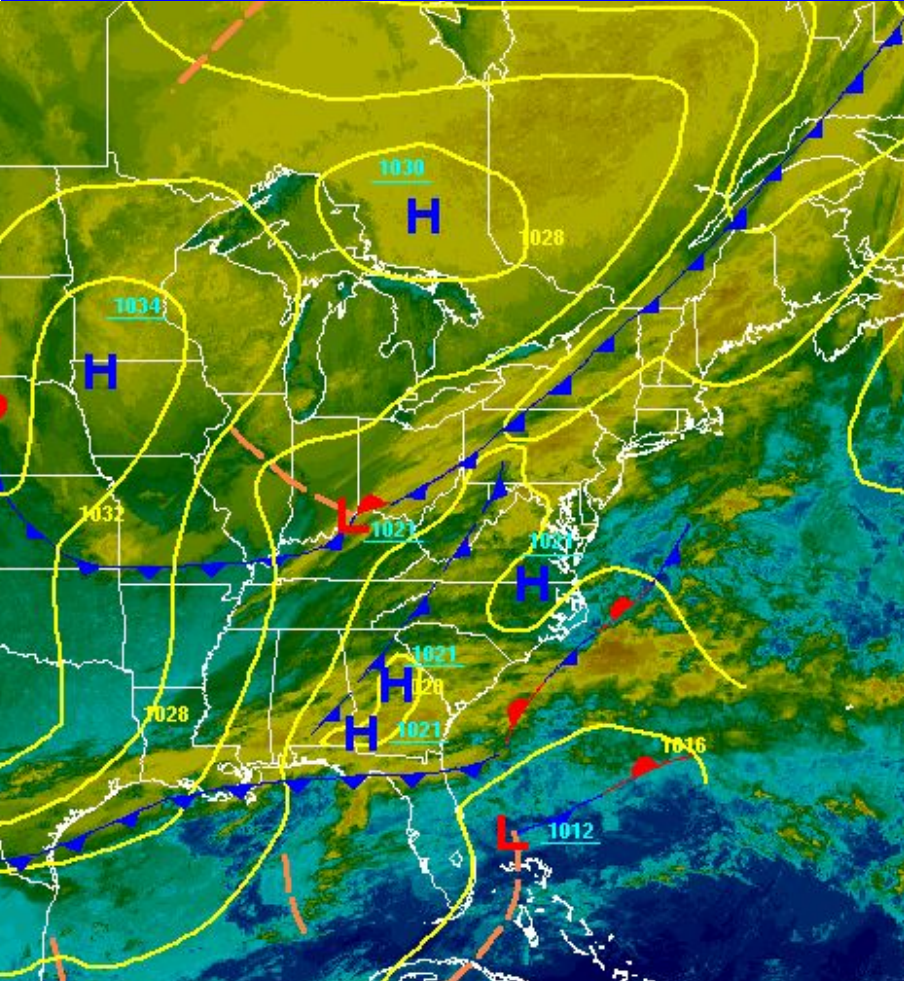
Near Weskan, KS

KANSAS STATE RECORD

30.0"

March of 2009 (Pratt, KS)

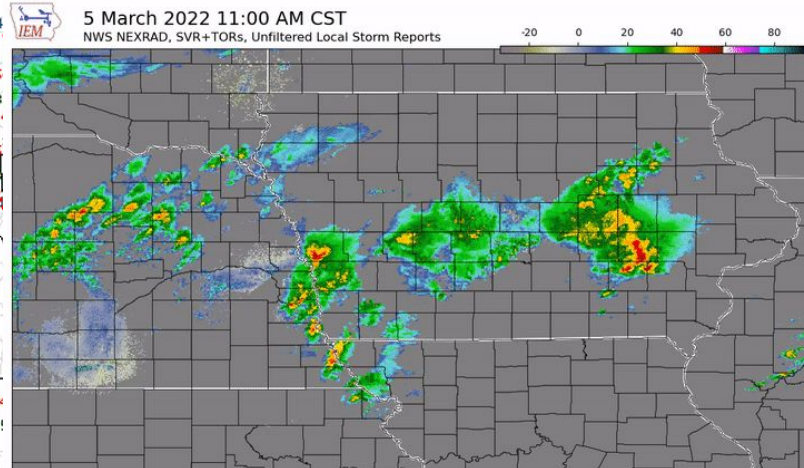
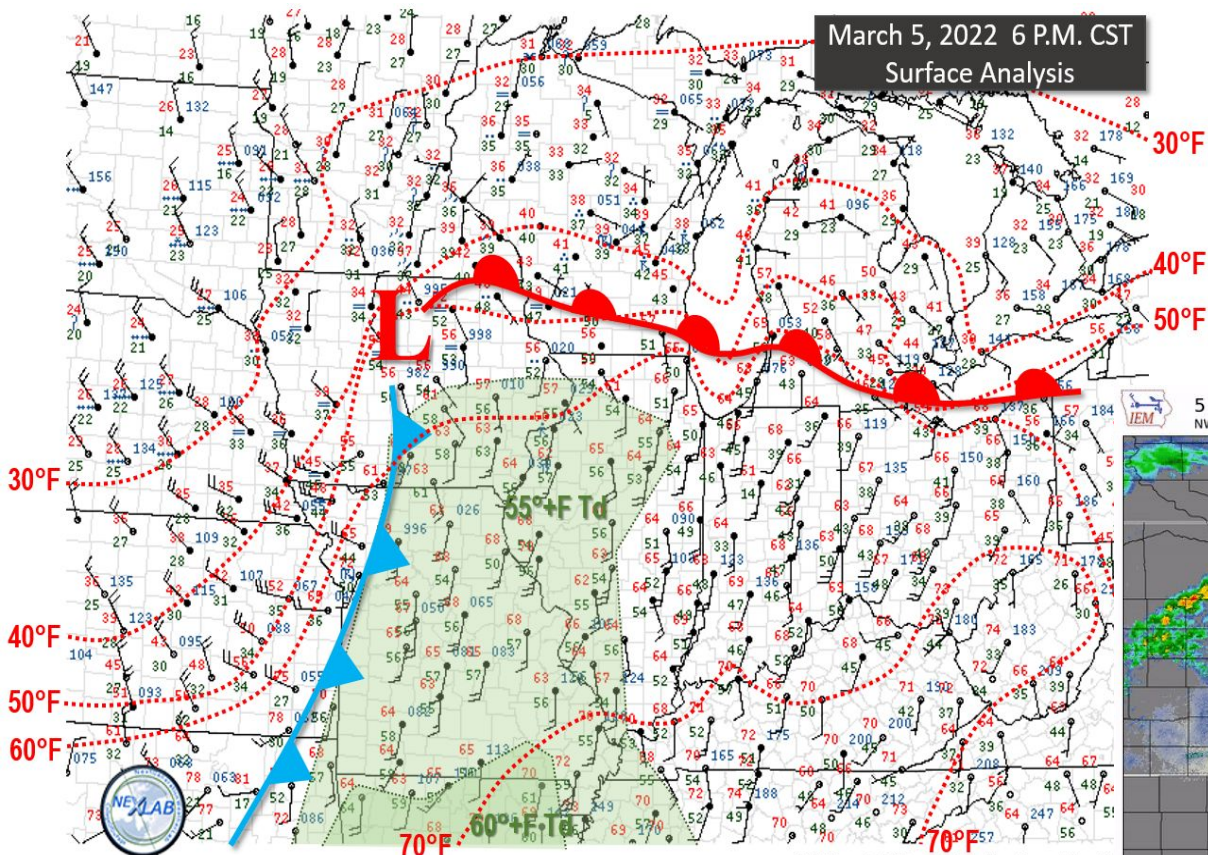
2 - 2022: The Jan. 28-30, 2022 Nor'easter



Boston got **23.6 inches of snow at Logan Airport**, making January 29, 2022 the snowiest single day ever recorded in the city. This is now the seventh biggest snowstorm of all time in Boston's recorded history. The record is still 27.6 inches set back in February 2003.

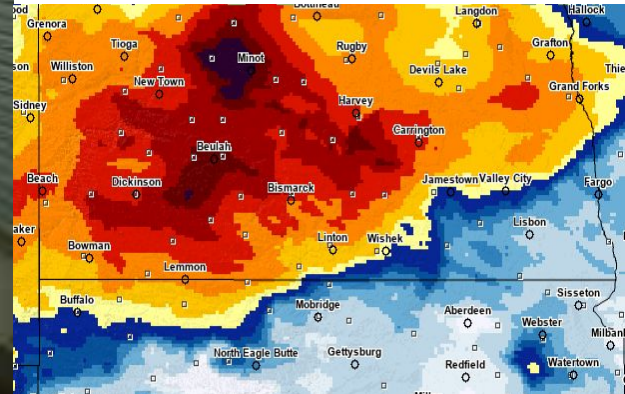
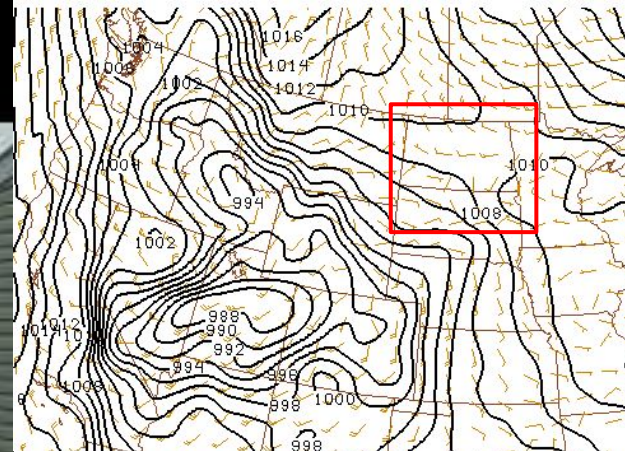
3 - 2022: The Deadliest Tornado Outbreak of the Year

Severe Thunderstorms and Tornadoes - March 5, 2022



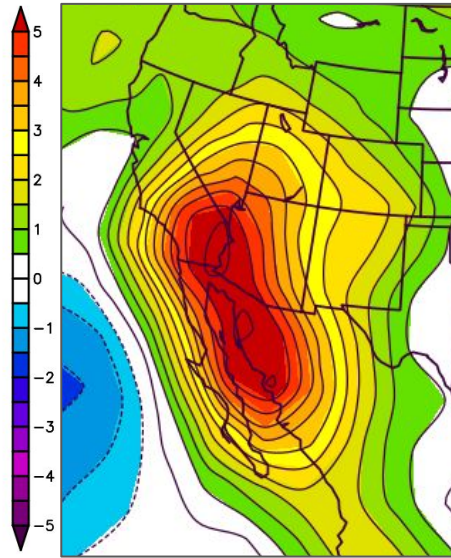
Analysis Valid Sun 06 Mar 2022 0000 UTC/05 Mar 6 P.M. CST Analyzed by NI

4 - 2022: Northern Rockies to Northern Plains Blizzard, Apr. 12-14

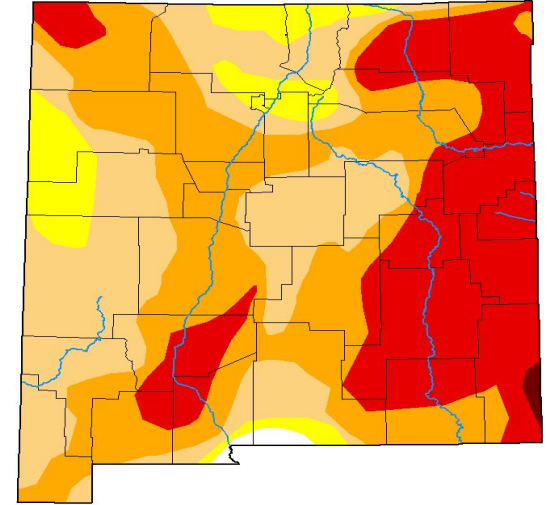
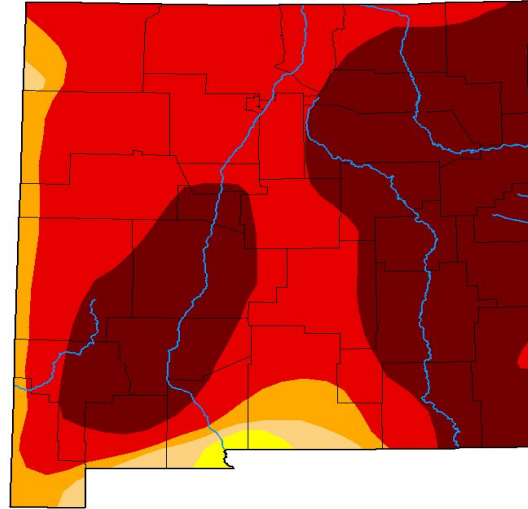


5 - 2022: The Monsoon Makes a Difference!

Heat, drought, and wildfires ramp up from April through May across the Southwest U.S. and then are subdued, especially across NM, by a remarkably persistent summer monsoon season.



NCEP/NCAR Reanalysis
May-Aug 2022 PW Anomaly (mm)
from
1991-2020 climatology

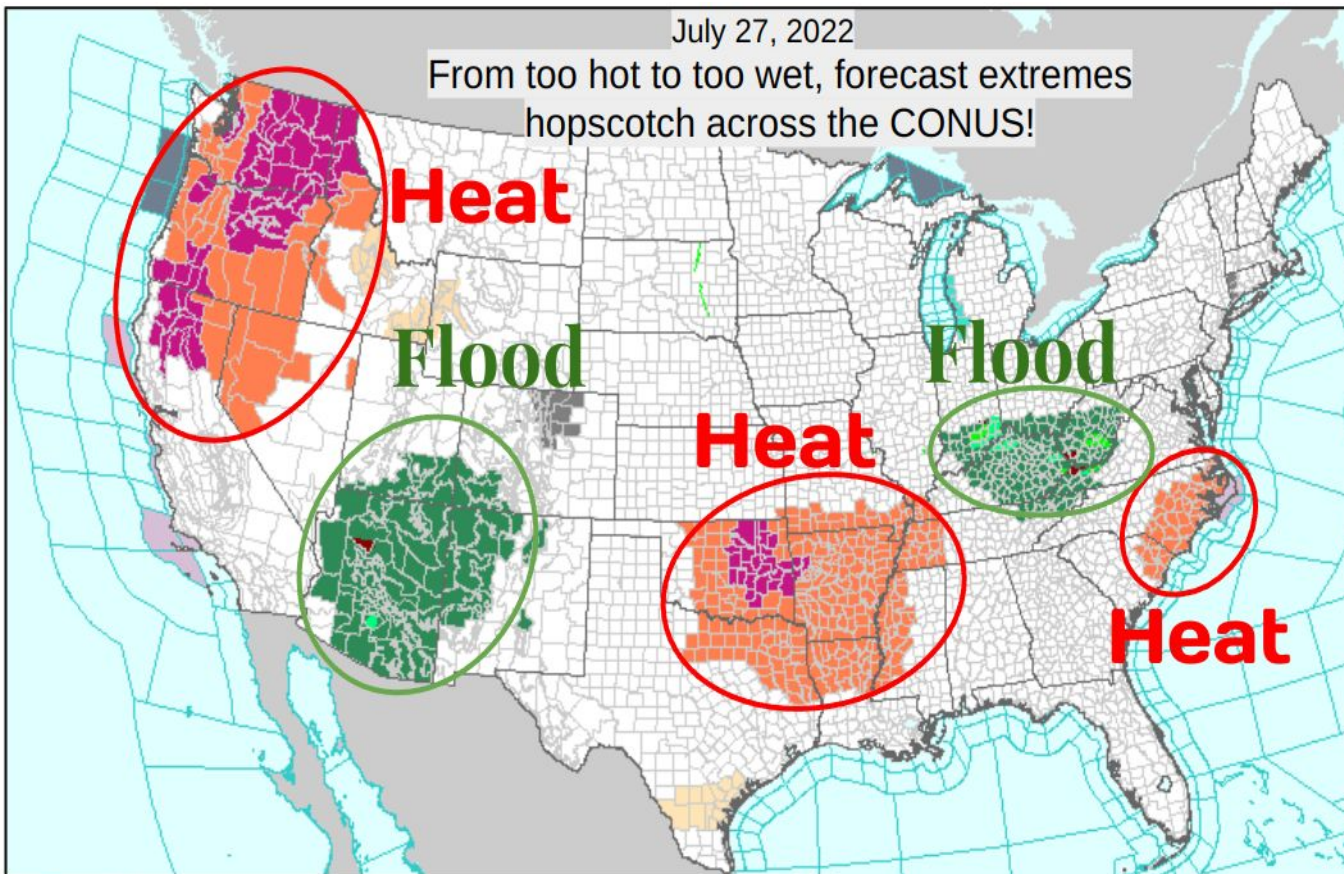


Week	None	D0-D4	D1-D4	D2-D4	D3-D4	D4	DSCI
2022-05-24	0.00	100.00	99.26	97.20	90.06	45.84	432
2022-08-16	0.60	99.40	91.52	62.11	28.25	0.33	282
Change	0.60	-0.60	-7.74	-35.09	-61.81	-45.51	-150

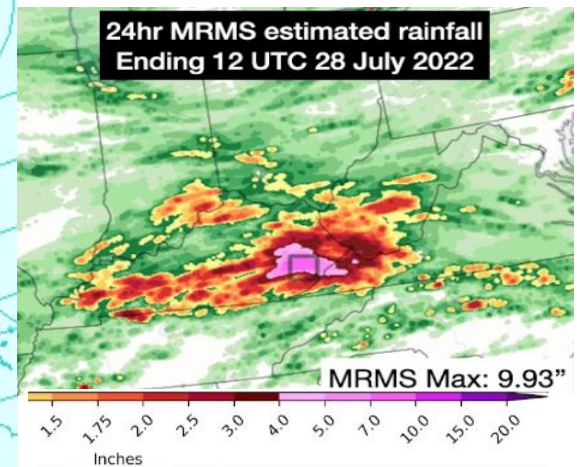
6 - 2022: HotWash Hopscotch (STL and Kentucky Deadly Floods)

July 27, 2022

From too hot to too wet, forecast extremes
hopscotch across the CONUS!



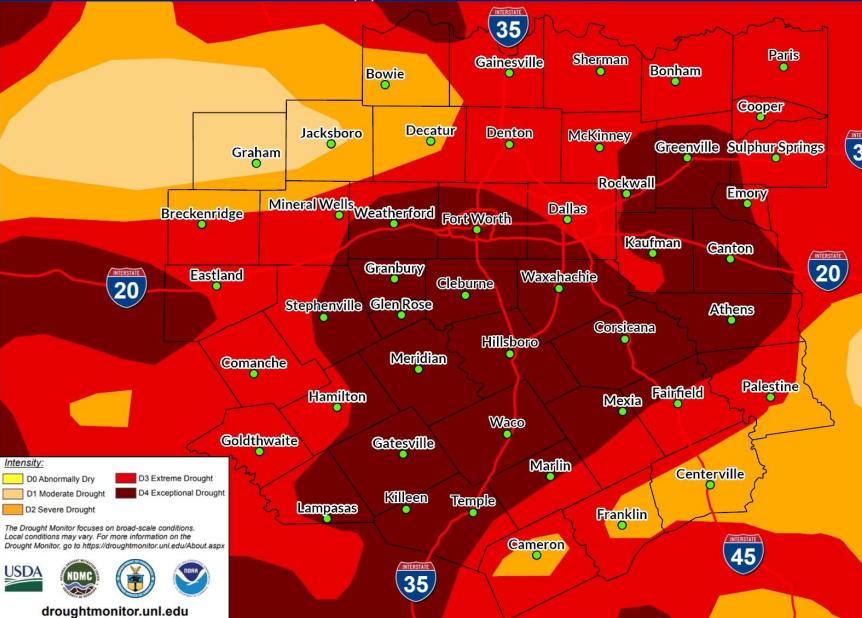
St. Peters, MO	12.86"
Creve Coeur, MO	11.44"
Flint Hill, MO	11.03"
St. Ann, MO	10.95"
St. Louis (KSTL)	9.07"



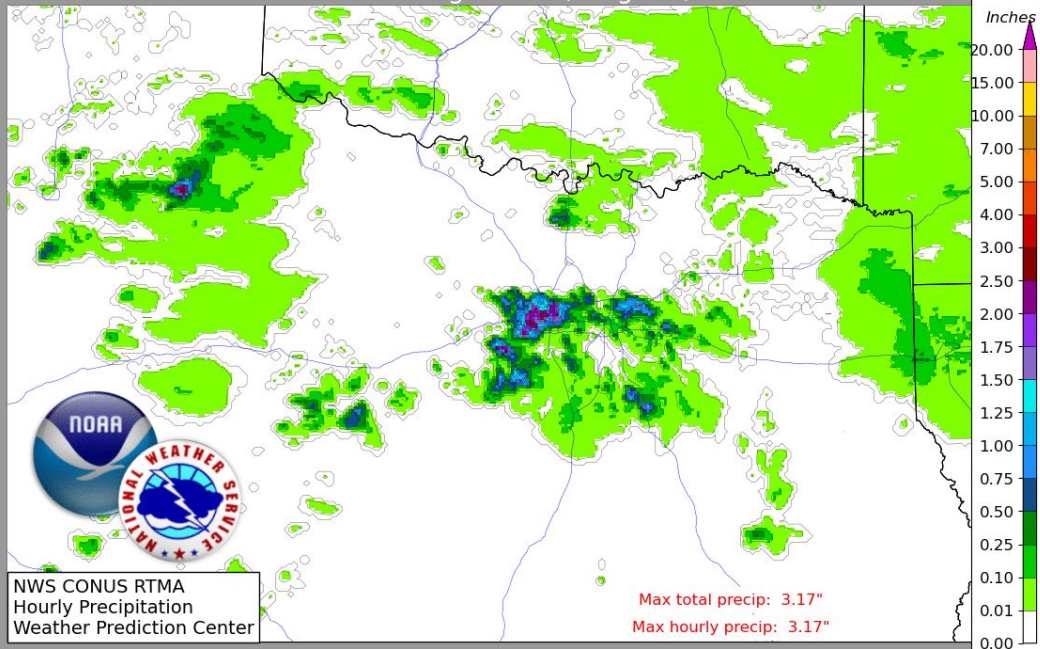
7 - 2022: Aug. 22, Drought to Deluge in Dallas

U.S. Drought Monitor - NWS Ft. Worth Forecast Area

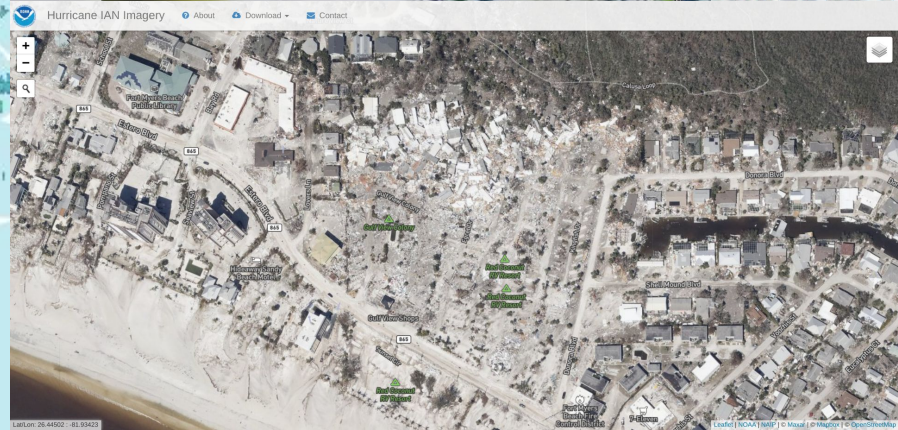
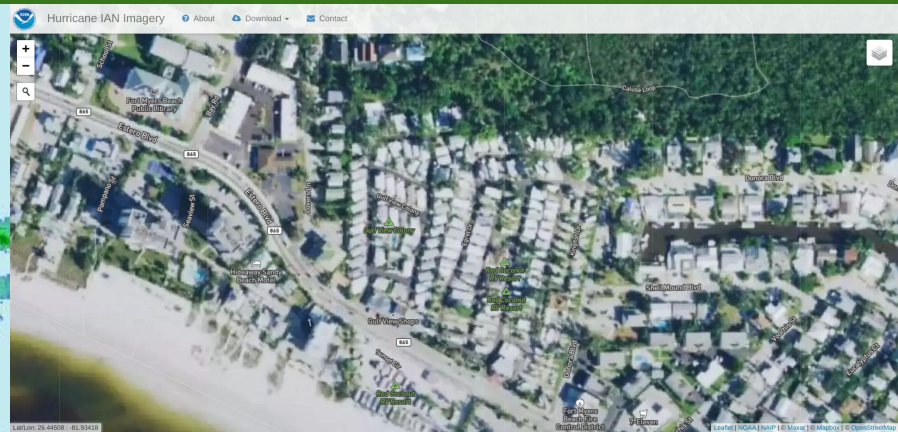
Released: Thursday, August 18, 2022
Valid 2 days prior to release date at 6 am Central



1 hour ending 03 UTC, Aug. 22, 2022

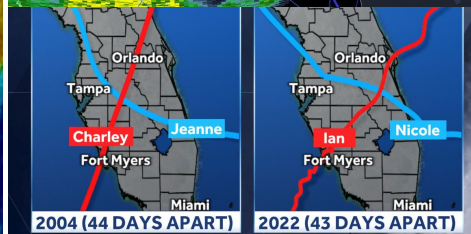
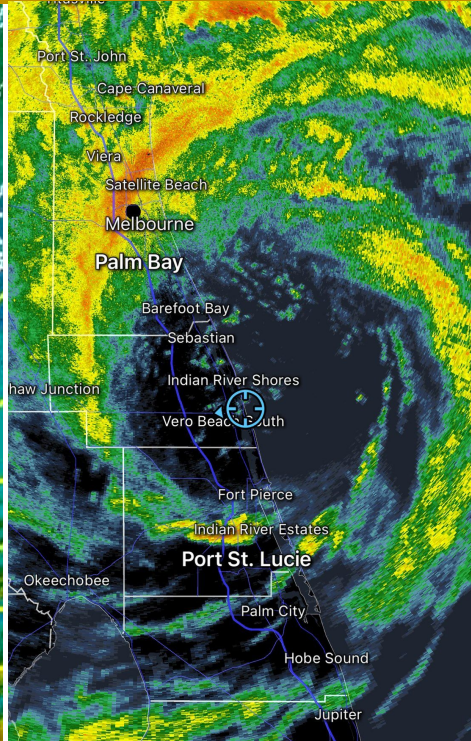
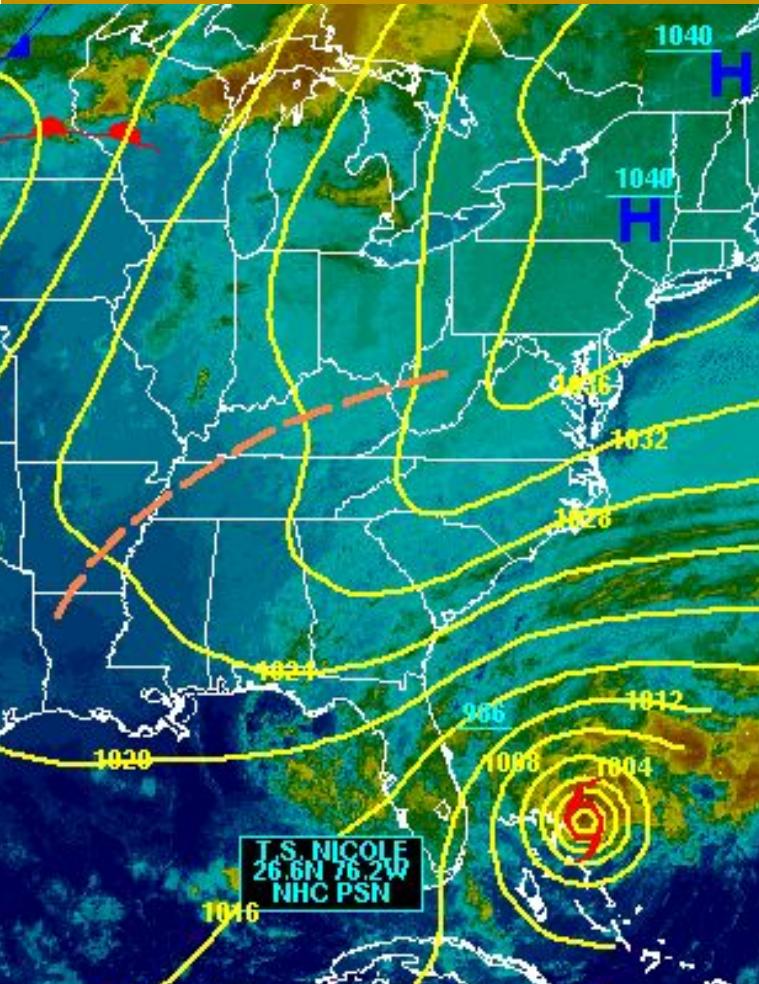


8 - 2022: Hurricane Ian Slams Southwest Florida, Sep. 27-29



114 deaths in Florida, billions \$ of property damage,
Incredible rainfall rates and long-term river flooding.

9 - 2022: Nov. 10-11, Hurricane Nicole & Seasonal Forecast Review



Predictions of tropical activity in the 2022 season

Source	Date	Named storms	Hurricanes	Major hurricanes	Ref
Average (1991–2020)		14.4	7.2	3.2	[8]
Record high activity		30	15	7†	[9]
Record low activity		4	2†	0†	[9]
CSU	December 9, 2021	13–16	6–8	2–3	[10]
TSR	December 10, 2021	18	8	3	[11]
TSR	April 6, 2022	18	8	4	[12]
CSU	April 7, 2022	19	9	4	[13]
TWC	April 14, 2022	20	8	4	[14]
UA	April 14, 2022	14	7	3	[15]
NCSU	April 20, 2022	17–21	7–9	3–5	[16]
PSU	May 9, 2022	11–19	N/A	N/A	[17]
UKMO*	May 23, 2022	18	9	4	[18]
NOAA	May 24, 2022	14–21	6–10	3–6	[19]
TSR	May 31, 2022	18	8	4	[20]
CSU	June 2, 2022	20	10	5	[21]
TWC	June 17, 2022	21	9	4	[22]
UA	June 20, 2022	15	7	3	[23]
TSR	July 5, 2022	18	9	4	[24]
CSU	July 7, 2022	20	10	5	[25]
UKMO	August 2, 2022	16	6	4	[26]
NOAA	August 4, 2022	14–20	6–10	3–5	[27]
CSU	August 4, 2022	18	8	4	[27]
TWC	August 18, 2022	17	7	3	[28]
Actual activity		14	8	2	

* June–November only

† Most recent of several such occurrences. (See all)

- Hamburg 81.2 inches
- Orchard Park 80 inches
- Blasdell 76 inches
- Elma 67 inches

2022

