



How NWS Albany utilizes CoCoRaHS data to create snow and rain ground truth verification maps in GIS (“GAZPACHO” maps)

Christina Speciale

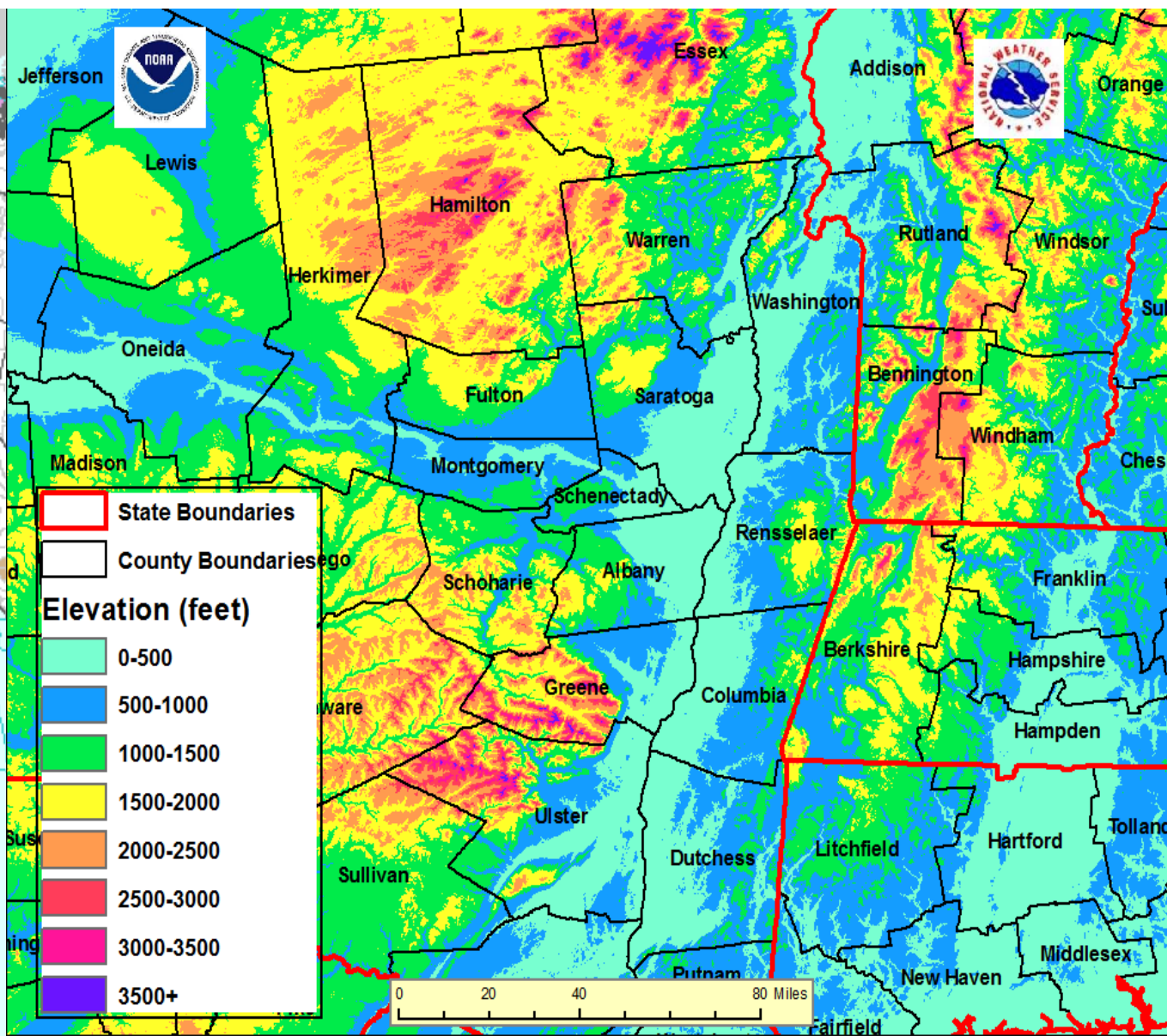
NWS Albany Meteorologist & co-coordinator for CoCoRaHS program in eastern NY & Western New England

Jennifer Vogt

NWS Albany Meteorologist & co-coordinator for CoCoRaHS program in eastern NY & Western New England



Albany, NY County Warning Area

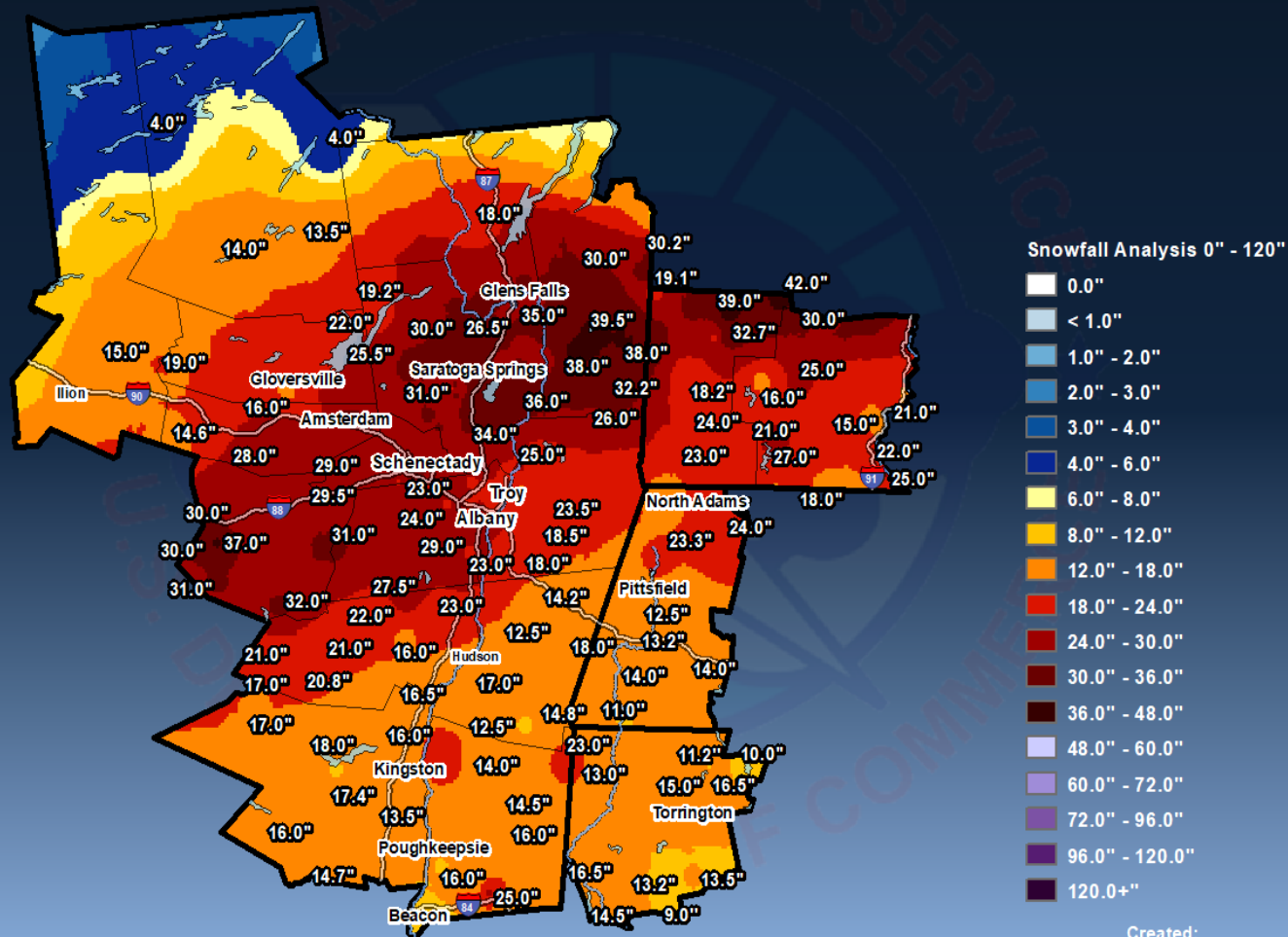




Mega Snowstorm – December 2020

National Weather Service Albany New York Historic Snowstorm 16-17 December 2020

Analysis Data Source: Regional Observations



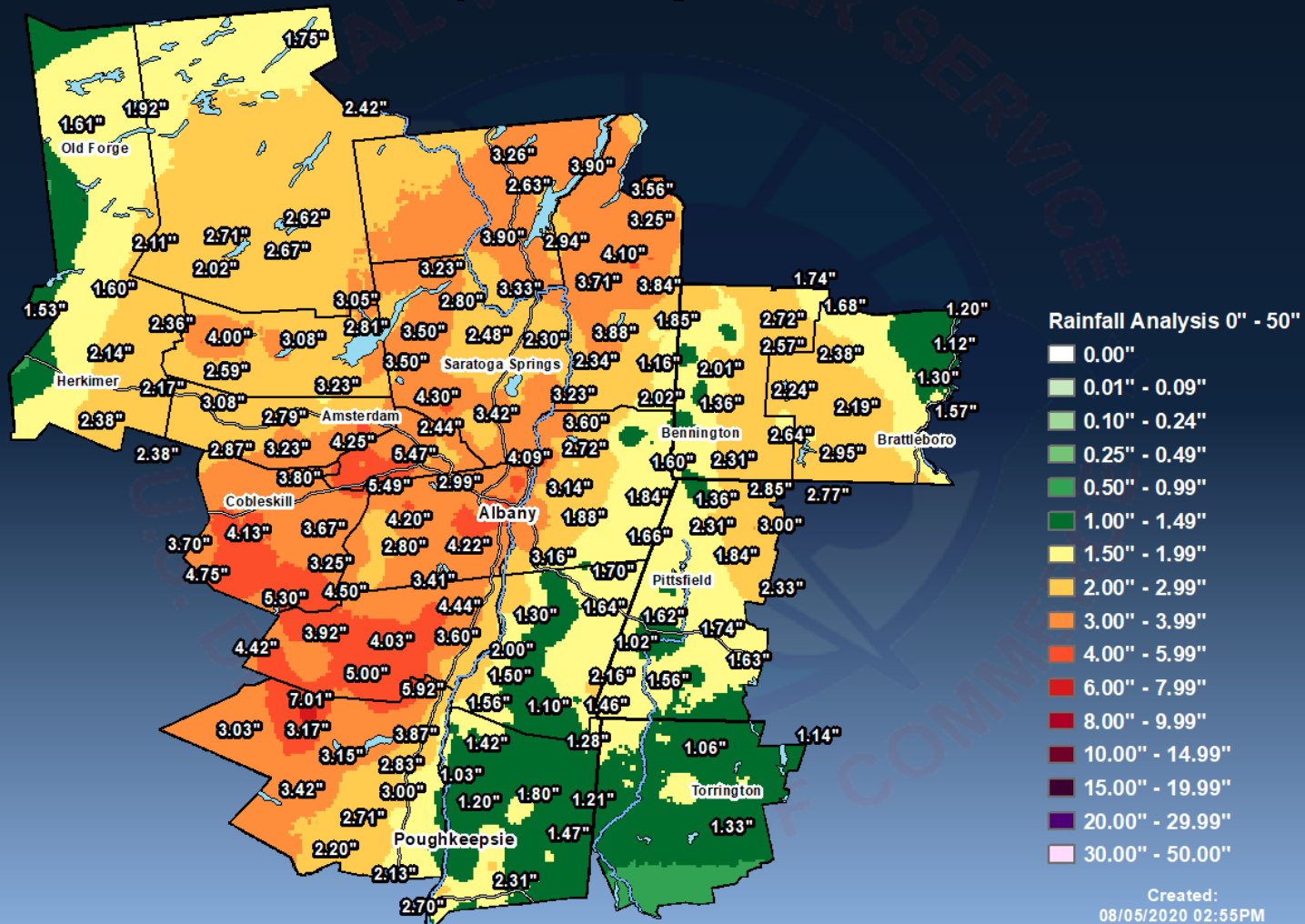
Created:
01/10/2021 11:17PM



Tropical Storm Isaias – August 2020

National Weather Service Albany New York Storm Total Rainfall Amounts

Analysis Data Source: Regional Observations



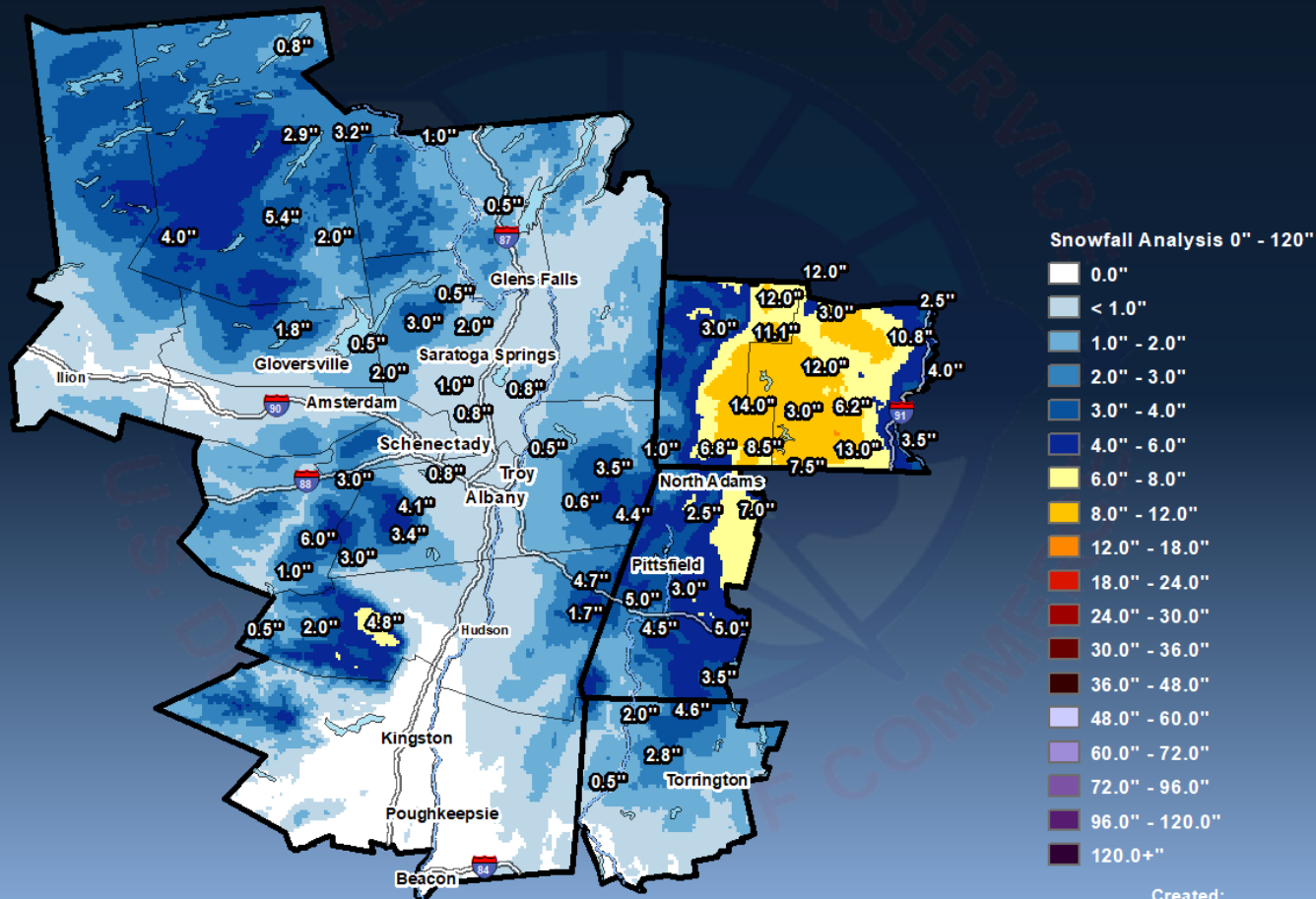
This is an experimental product. Care should be taken in using the data. Unofficial observations are plotted. Values at interpolated locations may not represent actual precipitation totals at that location.



Analyze (& appreciate!) CoCoRaHs data from high terrain

National Weather Service Albany New York Snowfall Apr 15-17, 2021

Analysis Data Source: NOHRSC and Regional Observations



Created:
04/17/2021 02:04PM

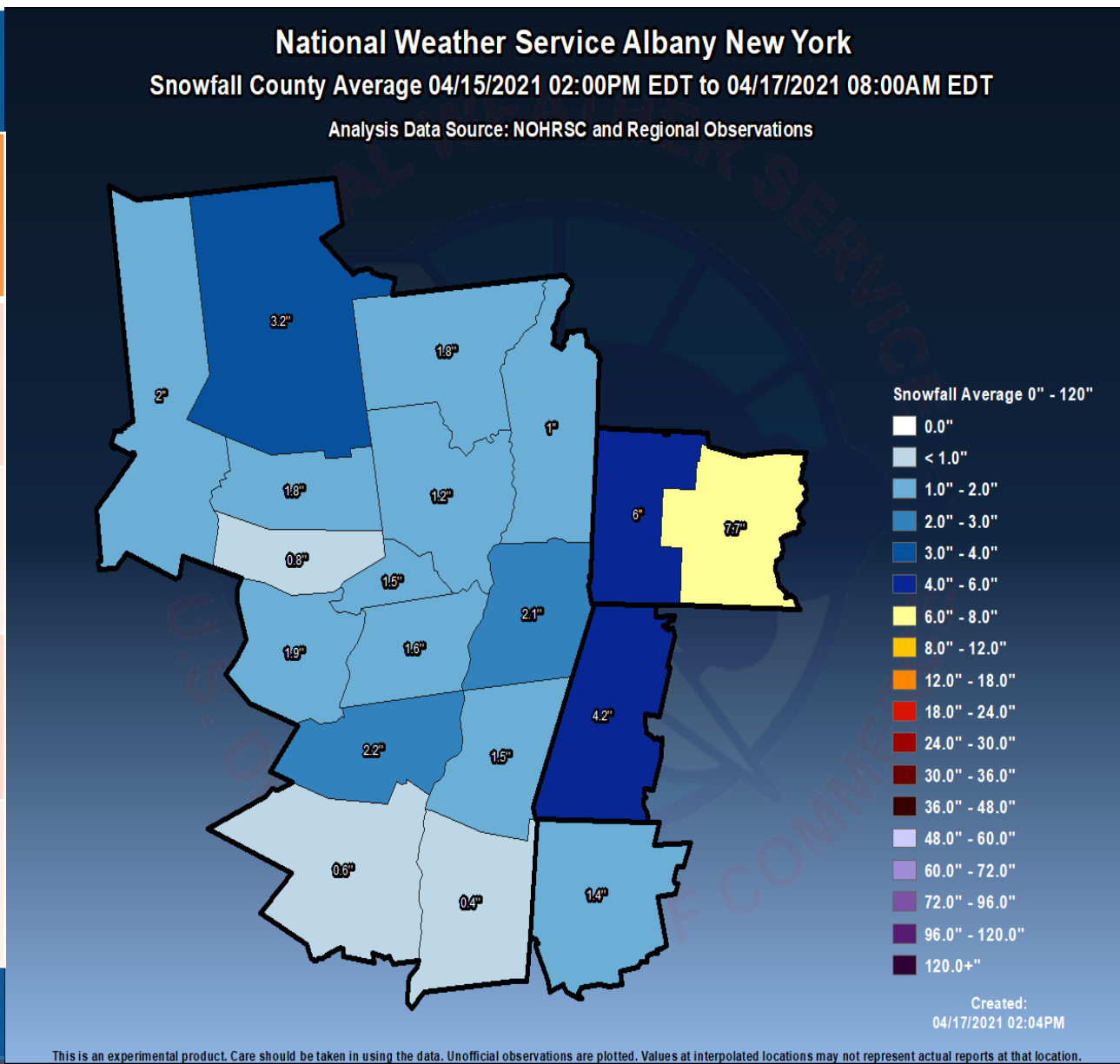
This is an experimental product. Care should be taken in using the data. Unofficial observations are plotted. Values at interpolated locations may not represent actual reports at that location.





CoCoRaHs Data Assists NWS Verification

	Winter Storm Warning Criteria
NY	7" in 12 hours ----- 9" in 24 hours
CT	6" in 12 hours ----- 8" in 12 hours
MA	6" in 12 hours ----- 8" in 12 hours
VT	6" in 12 hours ----- 9" in 12 hours





CoCoRaHs Data Assists NWS Verification

Winter Storm Warning Criteria

NY 7" in 12 hours

9" in 24 hours

CT 6" in 12 hours

8" in 12 hours

MA 6" in 12 hours

8" in 12 hours

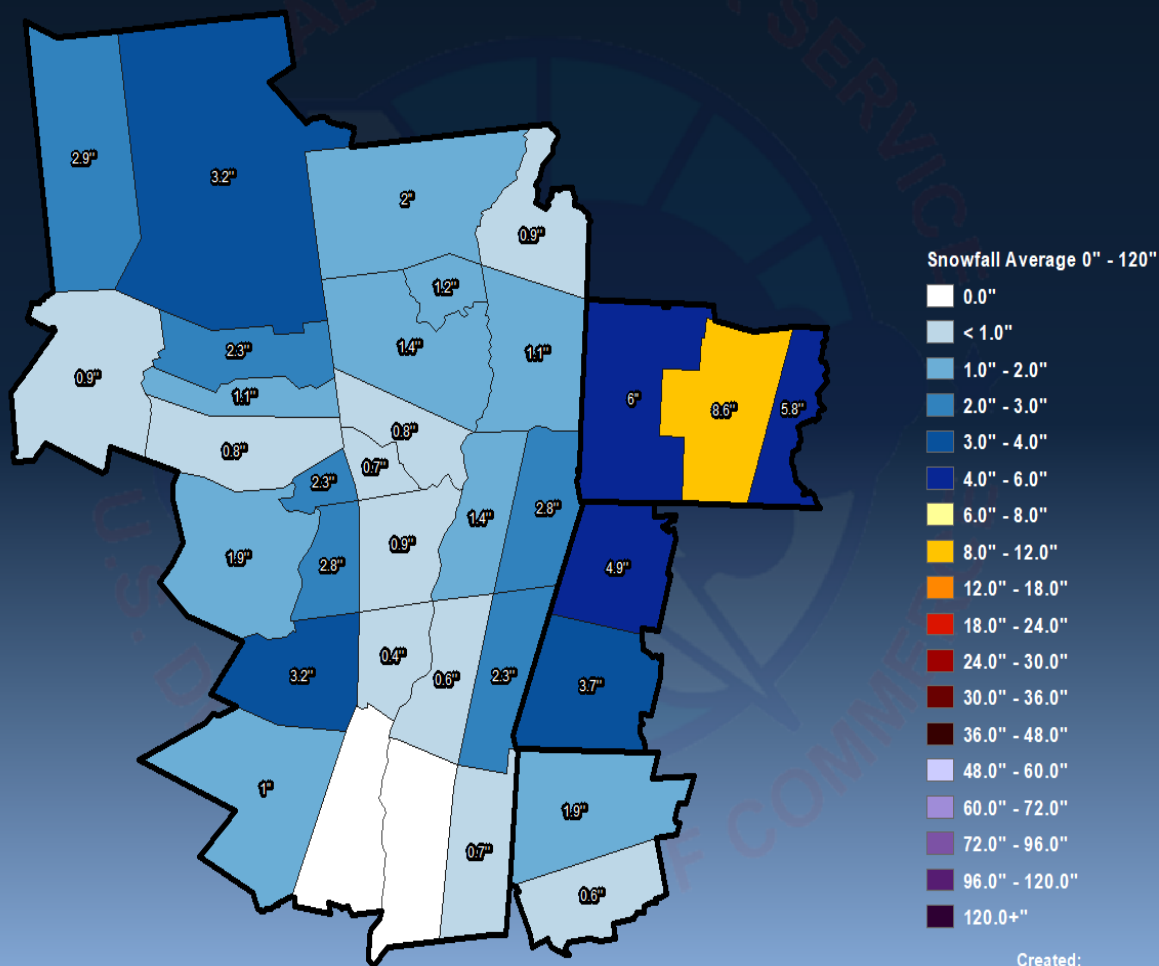
VT 6" in 12 hours

9" in 12 hours

National Weather Service Albany New York

Snowfall Zonal Average 04/15/2021 02:00PM EDT to 04/17/2021 08:00AM EDT

Analysis Data Source: NOHRSC and Regional Observations



Created:
04/17/2021 02:04PM



Questions?

Christina.speciale@noaa.gov

Jennifer.Vogt@noaa.gov