



Southeast Louisiana CoCoRaHS Newsletter

"Because every drop counts"

May was dry and hot across the Gulf South

Despite the fact that nearly 23 days of the month had measureable rain somewhere across the Bayou State, most locations remained below normal on precipitation totals for the month. A slow moving frontal system at the beginning of the month accounted for much of the monthly totals. The drier conditions have contributed to a longer term drought situation that was temporarily lessened in March and April. Soils are beginning to dry and green vegetation in the growing season is putting stress on ground water supplies. Please see the graphics on the back page for more details on last month's rainfall picture and the re-emergence of dryness and drought across the mid-Gulf States. The departure from normal depiction is quite telling on variability of even heavy rainfall days, where high amounts are in close proximity to dryness.

May Statistics

- **Wettest Month State & Local**
LA-EB-5 Gardere 1.2 ENE
10.10" on just 9 reports
- **2nd Wettest Month Local**
LA-EB-19 Monticello 3.0
ENE 7.25" on 7 reports
- **Number of Rain Days: 23**
- **Wettest Day State & Local:**
LA-AS-10 Prarieville 1.8 NW
5.59" on the 3rd
- **Driest Month Local**
LA-EB-9 Brownfields 5.8 NE
0.42" on 20 reports
- **Hail Days: 1**
Minden 2.2 NE reported
3/8" hail at 8:39 pm on May
7th.

Reporting Statistics (May)

- **Stations reporting: 104**
- **Number of reports: 2333**
- **Average daily reporting: 75.3**

Busiest Reporting Day

- **Date: May 8th**
- **Number of Reports: 86**
- **Average reported rainfall: 0.53"**
- **Max amount: 2.48"**

Wettest Reporting Day

- **Date: May 3rd**
- **Number of Reports: 77**
- **Average reported rainfall: 0.97"**
- **Max amount: 5.59"**

Hurricane Season Is Here

June 1st marked the start of the Atlantic Basin tropical cyclone season, which does include the Gulf of Mexico. This year wasted no time to get active, as Tropical Storm Alberto and Tropical Storm Beryl already came and went off the Carolinas and north Florida coasts in May. The actual official start date is merely a statistical mark that encompasses 95 percent of all historical tropical cyclones. Now is the time to review your personal preparedness plans. **DO NOT STAY BEHIND TO READ YOUR RAIN GUAGE** if you are in an evacuation area.

Comment of the Month - **From Reserve 0.5 SSE (LA-JB-2) on May 24, 2012**

"Couple of light afternoon showers, first rain in 10 days"

This pretty much summed up the dry conditions most experienced across southeast Louisiana in May.

Keep those rainfall and hail reports coming!

U.S. Drought Monitor

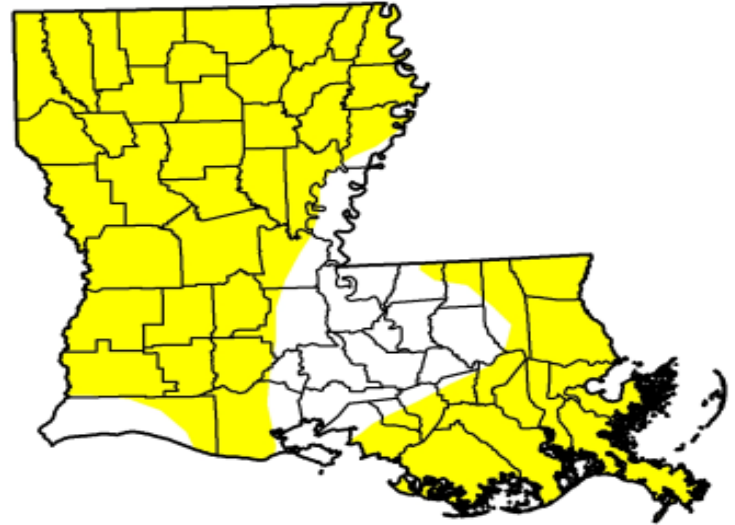
May 29, 2012

Valid 7 a.m. EST

Louisiana

Drought Conditions (Percent Area)

	None	D0-D4	D1-D4	D2-D4	D3-D4	D4
Current	20.28	79.72	0.00	0.00	0.00	0.00
Last Week (05/22/2012 map)	82.72	17.28	0.00	0.00	0.00	0.00
3 Months Ago (02/28/2012 map)	53.39	46.61	31.33	19.44	12.87	0.00
Start of Calendar Year (12/27/2011 map)	5.57	94.43	83.40	57.47	15.98	4.10
Start of Water Year (09/27/2011 map)	45.37	54.63	44.43	35.94	27.14	16.37
One Year Ago (05/24/2011 map)	0.00	100.00	95.73	90.32	60.30	10.35



Intensity:



The Drought Monitor focuses on broad-scale conditions. Local conditions may vary. See accompanying text summary for forecast statements.

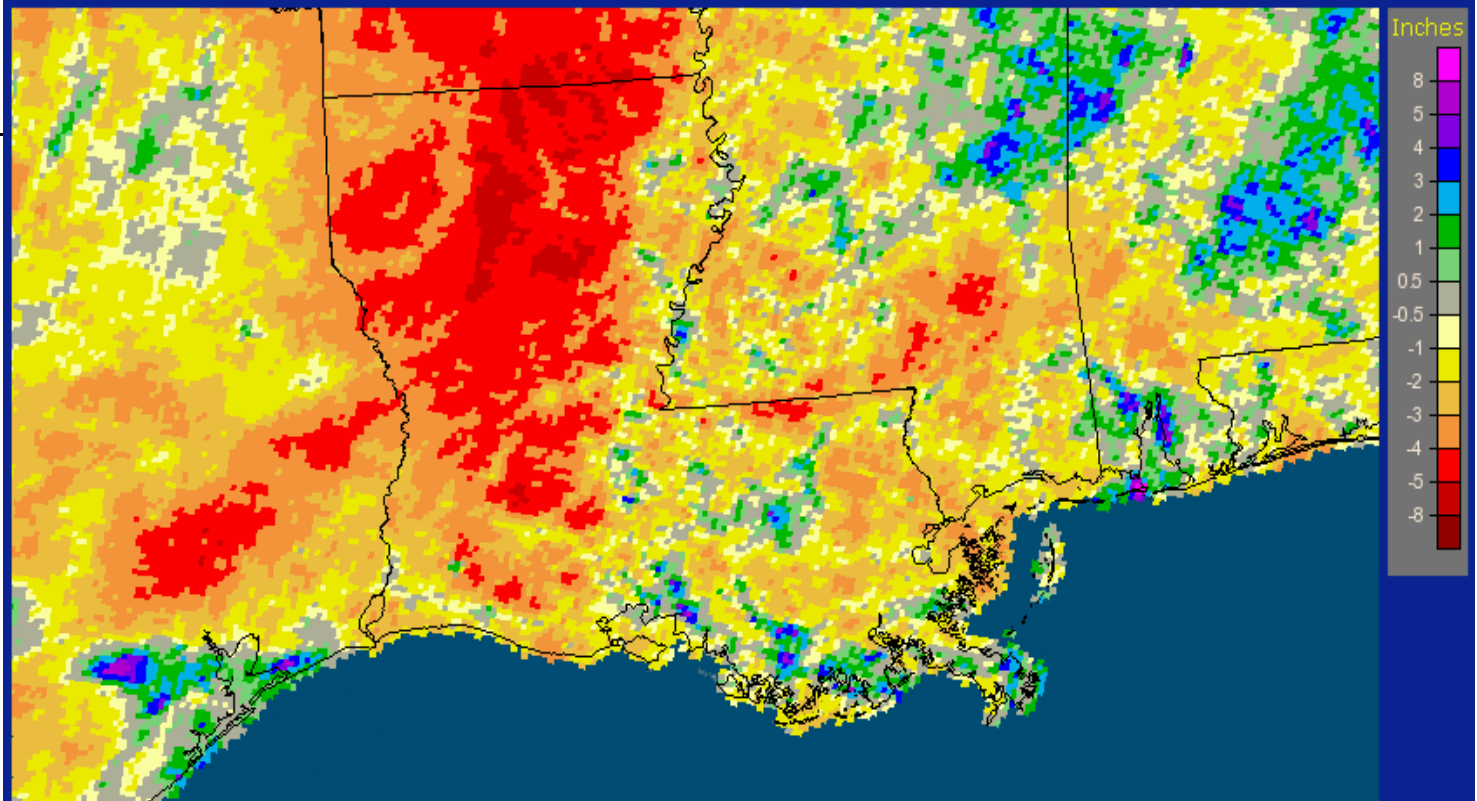


Released Thursday, May 31, 2012

Brad Rippey, U.S. Department of Agriculture

<http://droughtmonitor.unl.edu>

Louisiana: May, 2012 Monthly Departure from Normal Precipitation
Valid at 6/1/2012 1200 UTC - Created 6/3/12 21:40 UTC



This image depicts the departure from normal for May rainfall. The bright reds in the central and northern half of the state are 4 to 8 inches of deficit. Much of southeast Louisiana experienced deficits of 1 to 4 inches for the month with a few patches with greater deficits along the Mississippi border. Thanks to heavy rains on the 2nd-3rd, areas near Baton Rouge fared better than most, as well as along the immediate coast with gulf breeze afternoon activity.