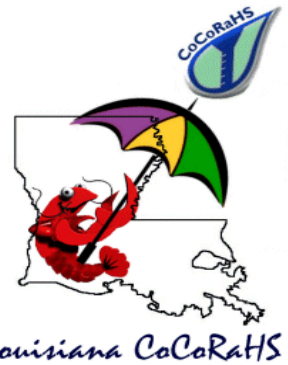


Southeast Louisiana CoCoRaHS Newsletter

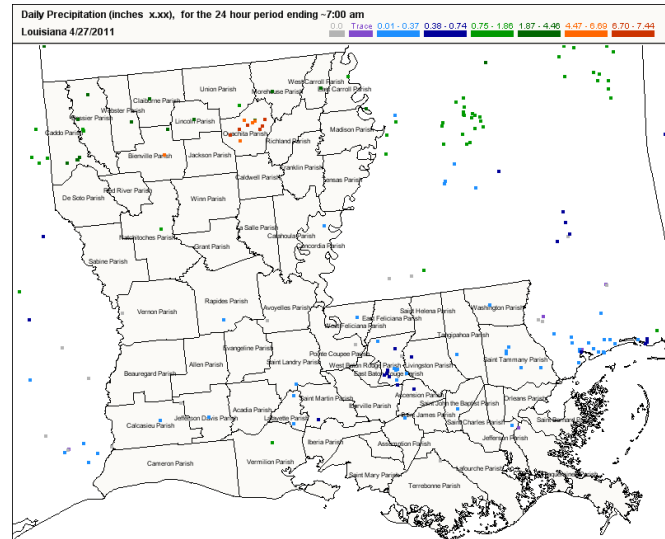
May 2, 2011



Drought and Flooding Co-existing?

April has been quite an interesting month, weather-wise, with much warmer temperatures and a few rounds of severe thunderstorms. A severe to exceptional drought was spreading from east Texas into western Louisiana and posing some issues and impacts upon the western parishes. A strong storm system then developed on the 26th of the month that produced extensive severe weather and torrential rainfall across the northern parishes of Louisiana. The area along the I-20 corri-

dor from Shreveport to Monroe and Vicksburg, MS received between 3 and 7.5 inches of rain by the morning of the 27th. Excessive and repetitive rains in the middle Mississippi Valley and the Ohio Valley was bringing the Mississippi River to record flood levels. These high flows will be moving downriver through much of May and passing through an area of the state that only received less than 1 inch of rain total for the month of April.



April 27th rainfall—Red dots near Monroe are in the 6.70 to 7.44 inch range. Southeast Louisiana remained dry.

April Statistics

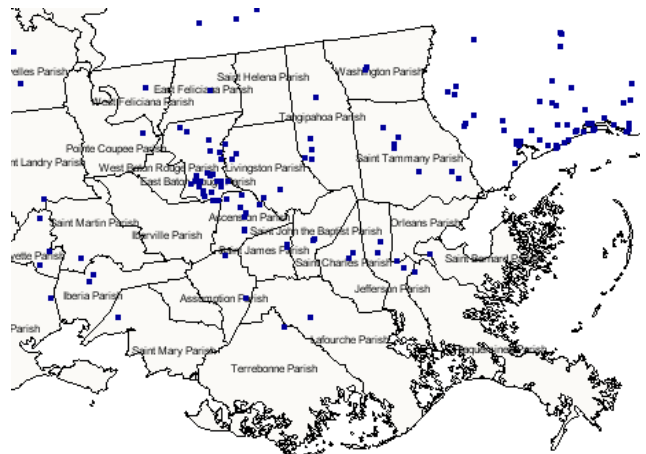
- **Wettest Month State:**
LA-OC-1 Swartz 2.0 SSW
12.52" on 30 reports
- **Wettest Month Local:**
LA-EB-14 Baton Rouge 3.5 E
2.96" on 27 reports
- **Driest Month Local:**
LA-JF-1 Terrytown 3.3 S
0.14" on 30 reports
- **Number of Rain Days:** **18**
- **Wettest Day State:**
LA-OC-16 Calhoun 4.3 SSE
7.44" on April 27th
- **Wettest Day Local:**
LA-EB-14 Baton Rouge 3.5 E
1.68" on April 26th
- **Hail Days:** **3**
Inniswold 2.8 S (LA-EB-42) re-
ported 1" (quarter) sized hail on
4/15/11 at 4:20 pm

State of the Network

The latest state roster indicates 168 active members who have taken and reported observations in the past few months. April had 101 stations report an observation, for a 60.1 percent participation rate among active members. This is a large improvement over the past couple of years. Locally, the Southeast Louisiana Parishes

have 71 active members, or 42.3 percent of the state roster. Only three parishes remain without an observer—Plaquemines, St. Helena and West

Baton Rouge Parishes. No new members enrolled in April. Each dot on the map is an active station in our area.



We're on the Web!
www.cocorahs.org

Robert J. Ricks, Jr.

NWS Forecast Office
 62300 Airport Road
 Slidell, LA 70460

Phone: (985) 649-0429
 Phone: (504) 522-7330
 E-mail: robert.ricks@noaa.gov
 E-mail: robricks86@hotmail.com



"Because every drop counts"

Comment of the Month: From Monroe 2.4 WNW (LA-OC-5) on April 27, 2011

Numerous tornado and severe thunderstorm warnings throughout the night. Lost cable/Internet at 12:30 am, thus no weather updates from the Weather Channel. Luckily had the battery-operated weather radio to stay abreast of warnings. Morning brought tons of yard debris deposited in the yard within a foot of the side door, which is about 2 feet above street level. Numerous limbs down, and Bayou DeSiard is out of its banks.

The Importance of a Comment to Augment Your Observations

The Super Outbreak of tornadoes across the Deep South at the end of April was quite a dramatic event. In many ways, it was similar to the Super Outbreak of April 3-4, 1974 in scope, but different in how the public reacted. Certainly, new social media and CoCoRaHS have provided new ways for people to communicate impacts, implore assistance and share emotions and experiences. Thank you for providing several timely and meaningful comments with your observations. The above comment is an example of one observer's experience with tornadoes nearby. I will start including a featured comment each month.

Reporting Statistics (April)

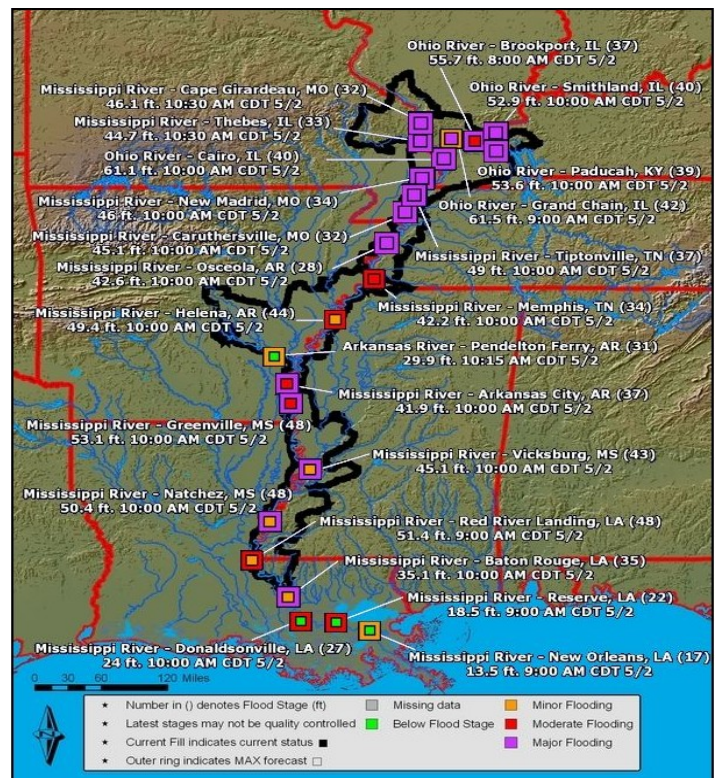
- **Stations reporting: 101**
- **Number of reports: 2118**
- **Average daily reporting: 70.6**

Busiest Reporting Day

- **Date: April 5th**
- **Number of Reports: 83**
- **Average reported rainfall: 0.49"**
- **Max amount: 1.28"**

Wettest Reporting Day

- **Date: April 27th**
- **Number of Reports: 64**
- **Average reported rainfall: 1.70"**
- **Max amount: 7.44"**



Map of forecast river status on the Mississippi River—courtesy of the Lower Mississippi River Forecast Center.

Keep those rainfall and hail reports coming!