

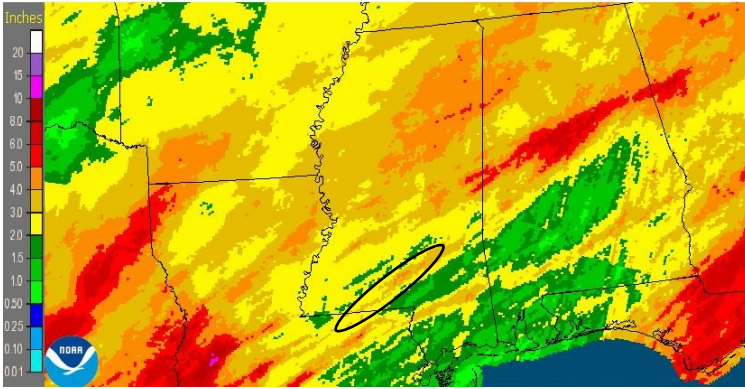


# South Mississippi CoCoRaHS Newsletter

"Because every drop counts"

## A relatively dry November in the Southern Counties

Mississippi: November, 2014 Monthly Observed Precipitation  
Valid at 12/1/2014 1200 UTC- Created 12/3/14 22:03 UTC

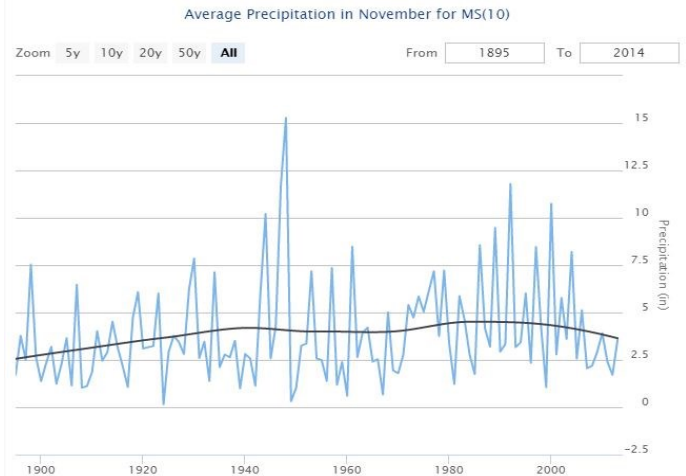


Accumulated rainfall for November 2014 in Mississippi

### November rain trends

I did a little light research to see how this November's rainfall pattern aligns with historical values. The graphic to the lower right shows all average rainfall for the coastal Mississippi counties in November, dating back to 1895. The swings from year-to-year are quite noisy, but a long term trend line (black trace) does show a downtrend since, roughly, the late 1990s. This was compared to the other 11 months of the year, and only June and September showed uptrend tendencies. The other 9 months were quite similar in appearance to the November trends. So what does this mean? Over the 119 year period, there are two distinct peak periods with a dip indicated between the 1940s through the early 1980s. This is known as a multi-decadal oscillation—a phenomenon that is seen in other aspects of climate study, including hurricane activity. Just thought this to be interesting to share.

November featured 12 days with measurable rainfall across the Magnolia State, mostly focused over the northern 2/3rd of Mississippi. The coastal and southwest counties did manage about 4 distinct rounds of rain that were generally focused on strong cold fronts that moved through the area throughout the month. The wettest location statewide was **West 4.9 ENE** in Attala County. Locally, that honor went to **Jayess 5.6 SW** in Pike County. That can be found under the narrow band of orange that is oriented southwest-to-northeast over central Pike County. Meanwhile, the coastal counties, particularly closer to the Alabama line, remained dry, with many locations only getting less than 1 inch for the month. **Diamondhead 0.9 NNW** only measured 0.43 inches, while **Waynesboro**, near the Alabama line, only reported 0.03" in November.



**Comment of the Month - From Jayess 5.6 SW (MS-PK-2) on November 17, 2014.**

***"Brief light snow at 11:54 PM."***

An unseasonably cold Arctic air mass brought record cold to the Deep South. A few snow flakes even flew before the precipitation ended. This location had the wettest day in the southern counties with this frontal passage, reporting 2.71 inches that morning. This was one of 374 comments submitted from Mississippi observers in November.

---

## NOVEMBER STATISTICS

---

### Wettest/Driest/Hail/Reporting

- ◆ Wettest Month, State— 6.00” on a perfect 30 reports at West 4.9 ENE (MS-AT-5)
- ◆ Wettest Month, Local — 3.34” on a perfect 30 reports at Jayess 5.6 SW (MS-PK-2)
- ◆ Wettest Day, State — 5.00” on the 17th at West 4.9 ENE (MS-AT-5)
- ◆ Wettest Day, Local—2.71” on the 17th at Jayess 5.6 SW (MS-PK-2)
- ◆ Number of Rain Days—12 with at least 0.01” average on a given day in the state.
- ◆ Driest Month, State—0.03” on 17 reports at Waynesboro 5.4 WNW (MS-WY-2)
- ◆ Driest Month, Local—0.43” on 15 reports at Diamondhead 0.9 NNW (MS-HC-5)
- ◆ Hail Reports: none    Snow Reports: none
- ◆ Stations Reporting: 160;    Number of Reports: 3567;    Average per day: 118.9
- ◆ Busiest Reporting Day: 6th, average: 0.26”, max amount: 2.00”, number of reports: 142
- ◆ Wettest Reporting Day: 17th, average 2.21”, max amount 5.00”, number of reports: 140
- ◆ Number of perfect 30 report observers: 43 stations statewide (26.9% of observers)!

### Winter Weatherization of your rain gauge

If the cold November is any indication, it could be a very cold winter this year, along with a potential for one or two rounds of winter type precipitation. This is just a reminder that if snow is forecasted for your area, please remove the funnel top and inner tube. Just let the snow accumulate in the big cylinder. When taking your reading, allow the snow to melt without applying too much heat, to get an accurate liquid equivalent. Also, take a good snow depth of any snow on the ground on a smooth, uninterrupted representative area of your yard. Finally, be careful not to slip and fall on icy surfaces attempting to get readings.

### End of year housecleaning

As we end this 2014 year, I will try to provide an annual summary for all the south Mississippi observers in the next issue. I will also be cleaning up the mailing list to which these newsletters are sent. If a location has not reported an observation in at least 6 months, they will be removed from the listing, unless they are a stakeholder in CoCoRaHS observations. If you know of anyone that would be interested in receiving this newsletter, or may be interested in joining CoCoRaHS, please have them contact me via e-mail at [robricks86@hotmail.com](mailto:robricks86@hotmail.com).



**Keep the DAILY rainfall reports coming!**