



"Because every drop counts"

# South Mississippi CoCoRaHS Newsletter

## May was dry and hot across the Gulf South

Despite the fact that 24 days of the month had measureable rain somewhere across the Magnolia State, most locations remained below normal on precipitation totals for the month across the southern half of the state. The drier conditions have contributed to a longer term drought situation that was temporarily lessened in March and April. Soils are beginning to dry and green vegetation in the growing season is putting stress on ground water supplies. Please see the graphics on the back page for more details on last month's rainfall picture and the re-emergence of dryness and drought across the mid-Gulf States. The departure from normal depiction is quite telling on variability of rainfall, where relatively high amounts are in close proximity to dryness.

### May Statistics

- **Wettest Month State:**  
**MS-GG-2 Lucedale 13.1 SE**  
**7.18" on 28 reports**
- **Wettest Month Local:**  
**MS-HR-22 Saucier 1.7 NNE**  
**6.08" on perfect 31 reports**
- **Number of Rain Days: 24**
- **Wettest Day State & Local:**  
**MS-HR-22 Saucier 1.7 NNE**  
**4.73" on the 3rd**
- **Driest Month Local:**  
**MS-JC-15 Ocean Springs 1.7**  
**W 1.68" on just 4 reports**
- **Hail Days: 1**  
**Ackerman 4.9 W reported**  
**1/2-3/4" hail at 4:30 pm on**  
**May 21st.**

### Reporting Statistics (May)

- **Stations reporting: 151**
- **Number of reports: 3661**
- **Average daily reporting: 118.1**

### Busiest Reporting Day

- **Date: May 8th**
- **Number of Reports: 132**
- **Average reported rainfall: 0.25"**
- **Max amount: 1.79"**

### Wettest Reporting Day

- **Date: May 13th**
- **Number of Reports: 121**
- **Average reported rainfall: 1.09"**
- **Max amount: 4.10"**

### Hurricane Season Is Here!

June 1st marked the start of the Atlantic Basin tropical cyclone season, which does include the Gulf of Mexico. This year wasted no time to get active, as Tropical Storm Alberto and Tropical Storm Beryl already came and went off the Carolinas and north Florida coasts in May. The actual official start date is merely a statistical mark that encompasses 95 percent of all historical tropical cyclones. Now is the time to review your personal preparedness plans. **DO NOT STAY BEHIND TO READ YOUR RAIN GUAGE** if you are in an evacuation area.

### Comment of the Month - From Pass Christian 5.0 N (LA-HR-19) on May 30, 2012

**" A very few sprinkles after 7:00 AM yesterday. I had flying ants in the pool yesterday; usually it takes more of a rain than that to cause them to dive in my pool."**

This was an amusing posting by our observer , noticing the affects of a little rain on the swarms of flying ants that emerged last month.

**Keep those rainfall and hail reports coming!**

# U.S. Drought Monitor

May 29, 2012

Valid 7 a.m. EST

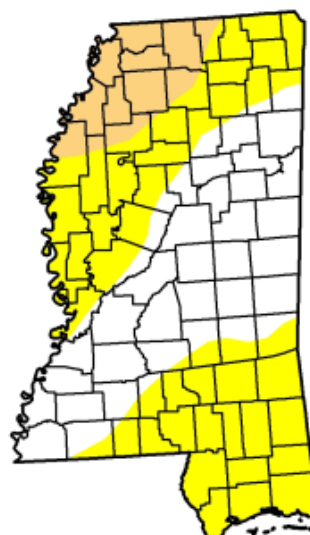
## Mississippi

Drought Conditions (Percent Area)

	None	D0-D4	D1-D4	D2-D4	D3-D4	D4
Current	41.67	58.33	10.99	0.00	0.00	0.00
Last Week (05/22/2012 map)	77.62	22.38	2.44	0.00	0.00	0.00
3 Months Ago (02/28/2012 map)	90.20	9.80	2.44	0.06	0.00	0.00
Start of Calendar Year (12/27/2011 map)	79.57	20.43	13.85	0.02	0.00	0.00
Start of Water Year (09/27/2011 map)	91.16	8.84	2.37	0.07	0.00	0.00
One Year Ago (05/24/2011 map)	25.05	74.95	29.27	9.12	4.49	0.00

Intensity:

- D0 Abnormally Dry
- D1 Drought - Moderate
- D2 Drought - Severe
- D3 Drought - Extreme
- D4 Drought - Exceptional



The Drought Monitor focuses on broad-scale conditions. Local conditions may vary. See accompanying text summary for forecast statements.

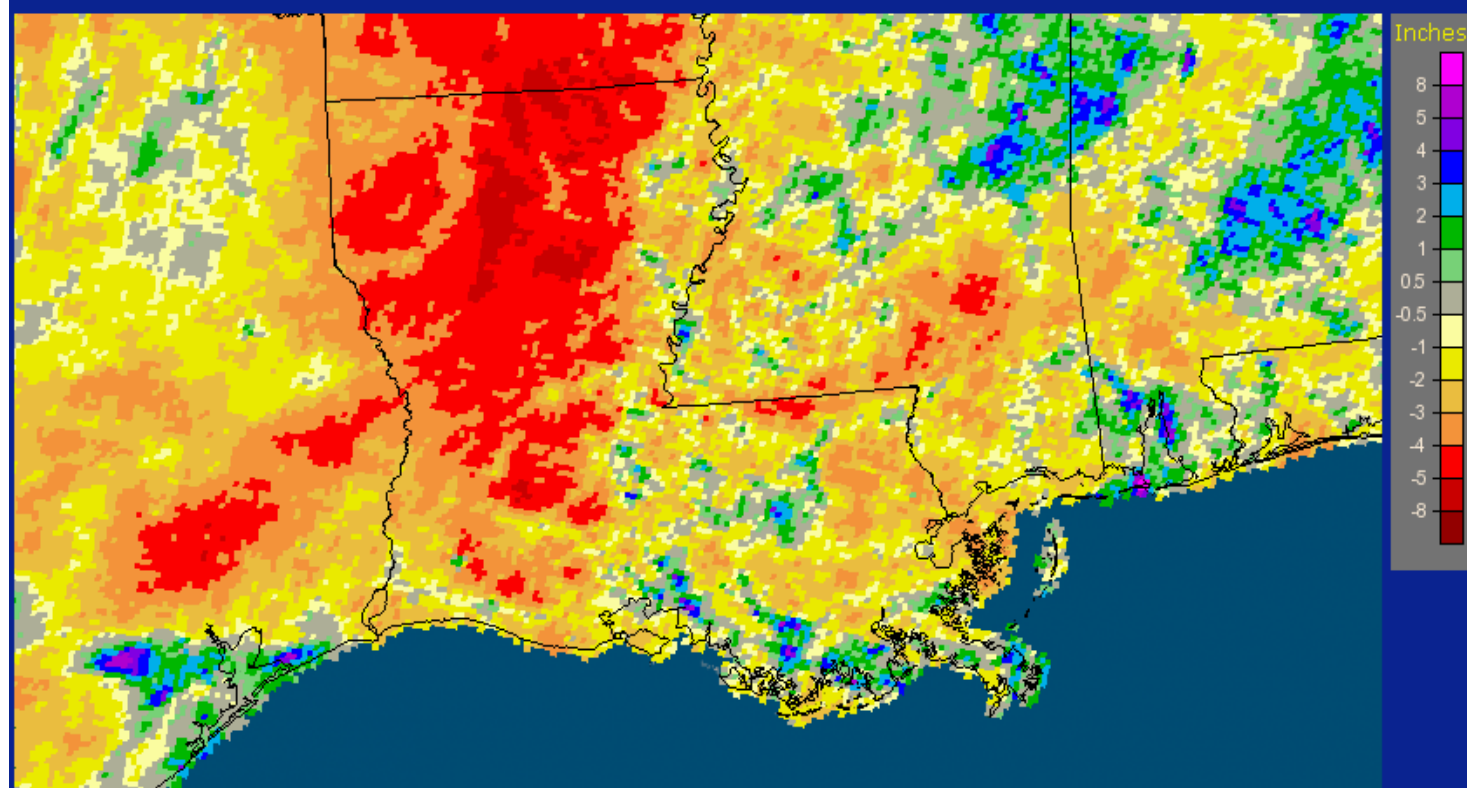


Released Thursday, May 31, 2012

Brad Rippey, U.S. Department of Agriculture

<http://droughtmonitor.unl.edu>

Louisiana: May, 2012 Monthly Departure from Normal Precipitation  
Valid at 6/1/2012 1200 UTC - Created 6/3/12 21:40 UTC



The image above shows the departure from normal rainfall for the month of May. Note the swath of red from about Hattiesburg to south of McComb and Liberty, MS, indicative of rainfall deficits near 5 inches for May. Nearly all of southern Mississippi had below normal rainfall for the month, which is attributing the re-emergence of "Abnormally Dry" drought classification once again across the Gulf South.